



AIR BEARING STAGES (CLICK FOR DATASHEETS)

CERAMIC SERVO MOTORS

AI—D4-5000E-AB

AI—D4-10000E-AB

AI—D4-20000E-AB

AI—D4-40000E-AB

AI—D4-60000E-AB

LINEAR SERVO MOTORS

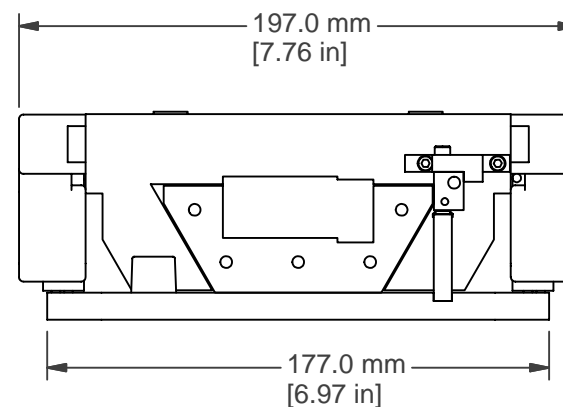
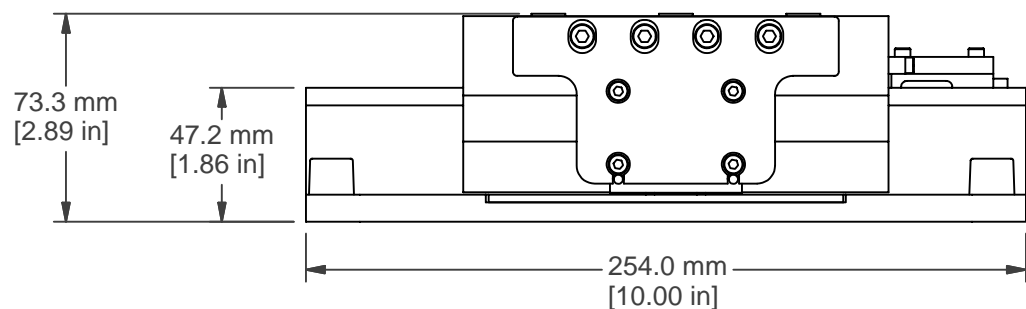
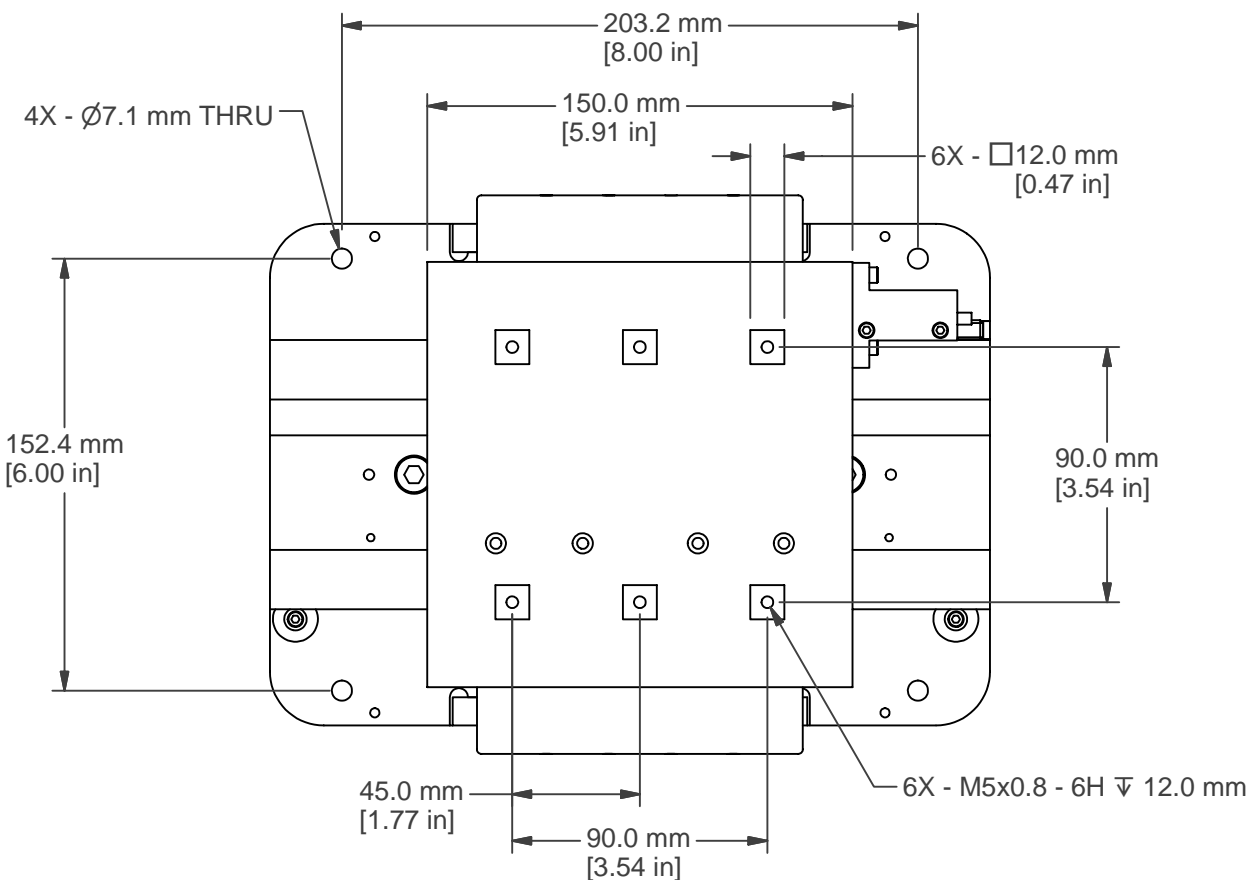
AI-L12-(xyz)00-AB

CUSTOM STAGES

AI-D4-15000E-GLASS



AI-D4-5000E-AB



AIR QUALITY
 AIR SUPPLY MUST BE FREE OF CONTAMINANTS
 AND MOISTURE. FILTERED AIR SUPPLY TO
 ISO 8573.1 QUALITY CLASS 3

CLASS: 3 (RECOMMENDED)
 DIRT: 5 MICRON PARTICAL SIZE OR SMALLER
 WATER: -4 F, PRESSURE DEWPOINT
 (128 ppm. vol.) AT 100 psig
 OIL: 1.0 mg/m³ (INCLUDING VAPOR)

CLASS: 4 (MINIMUM)
 DIRT: 15 MICRON PARTICAL SIZE OR SMALLER
 WATER: +37.4 F, PRESSURE DEWPOINT
 (940 ppm. vol.) AT 100 psig
 OIL: 5 mg/m³ (INCLUDING VAPOR)

STANDARD FEATURES

MOTORS: DUAL HR-4, MAX FORCE 30 to 36 N
 TRAVEL: 50mm
 SPEED: 250mm/sec MAX.
 ENCODER OUTPUT: ANALOG 1 Vp-p (STANDARD)
 OPTIONAL: 5um, 1um, 0.5um, 0.1um, 50nm, 20nm,
 10nm or 5nm USING 4096 INTERPOLATION (NOTE 1.)
 SYSTEM REPEATABILITY: +/- 1 ENCODER COUNT (NOTE 1.)
 HOME SENSOR: STANDARD
 BEARINGS: PRECISION AIR BEARING
 REFER TO AIR PURITY SPECIFICATION
 OPERATING PRESSURE: 60 PSIG TO 80 PSIG, 120 PSIG Max.
 MAXIMUM LOAD RATING: 750N (@ 60 psig)
 HORIZONTAL STRAIGHTNESS: 5 micro-inch /inch
 VERTICAL STRAIGHTNESS: 5 micro-inch /inch
 HORIZONTAL STIFFNESS: 105*10e6 N/m (600,000 lbs/in)
 VERTICAL STIFFNESS: 140*10e6 N/m (800,000 lbs/in)
 ENCLOSURES: ALUMINUM
 ATMOSPHERES: STANDARD & CLEAN ROOM
 TEMPERATURE: 10 to 35 DEG C
 HUMIDITY: 10% to 80% NON-CONDENSING

**NOTE 1 - FOR OPTIMAL AXIS PERFORMANCE, ALIO
 RECOMMENDS THE USAGE OF A DELTA TAU
 PMAC2A-PC/104 CONTROLLER WITH THE DELTA TAU
 ACCESSORY ACC-51S: 4096x SINUSOIDAL INTERPOLATOR.**

ACCESSORIES

MOTOR AMPLIFIER (AB5A-E8)

OPTIONAL EQUIPMENT

MOTION CONTROLLERS
 ENCODER INTERPOLATION, DESCRETE VALUE

CUSTOM DESIGNS FOR OEM INTEGRATION

**USE IN-LINE PRESSURE SWITCH TO KILL MOTOR POWER
 IF AIR PRESSURE DROPS BELOW RATED OPERATING VALUE**

DO NOT OPERATE UNLESS AIR PRESSURE IS APPLIED!



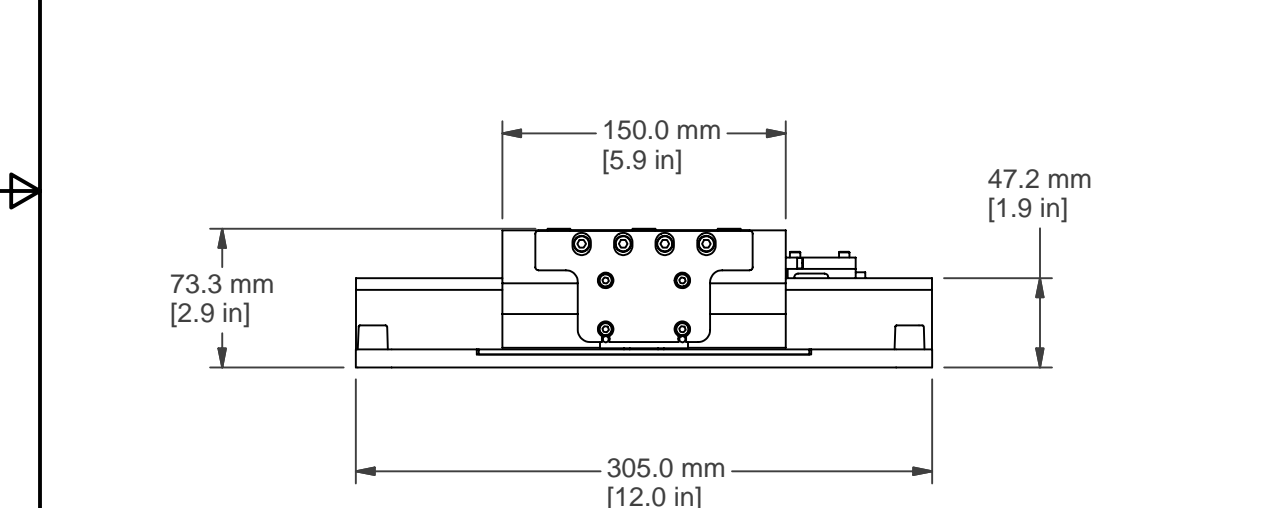
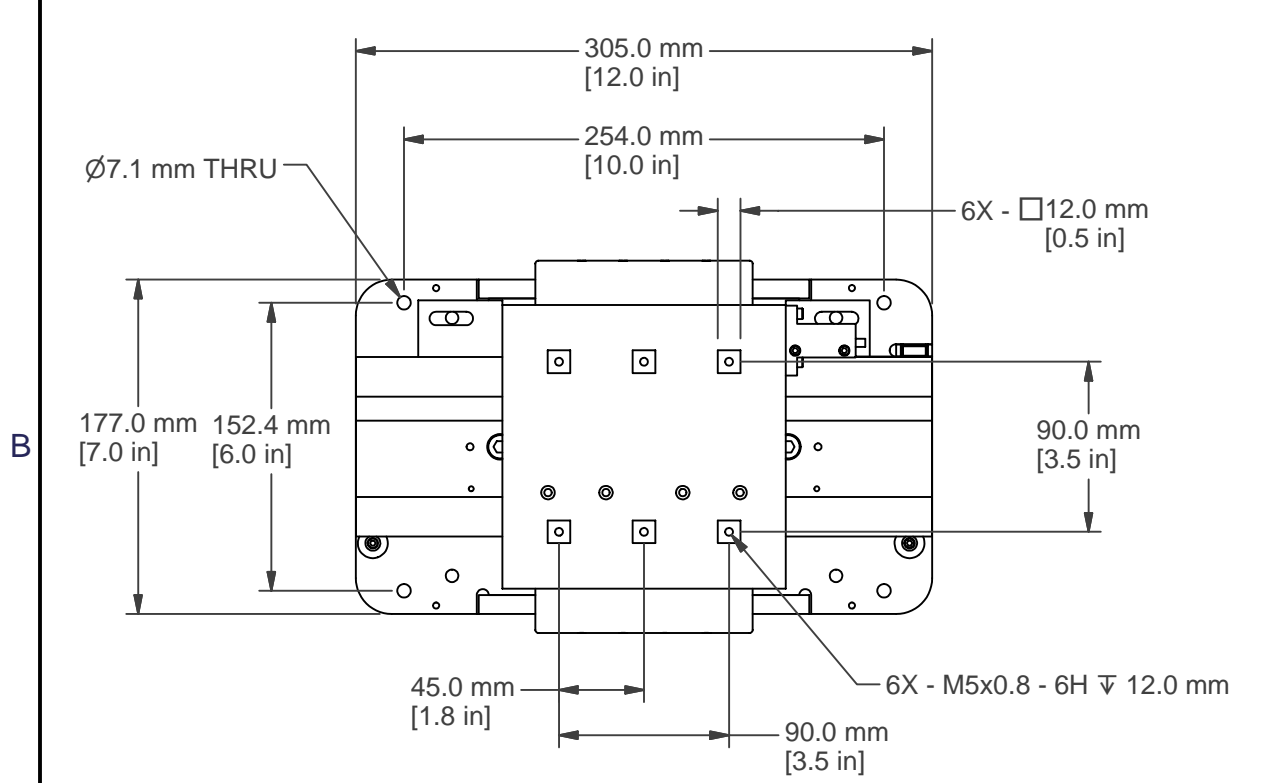
ALIO INDUSTRIES
 11919 W I-70 FRONTAGE ROAD N.
 UNIT 119
 WHEAT RIDGE, CO 80033 USA
 (T) 303-339-7500
 www.alioindustries.com

DRAWN	Dan Crews	10/12/2004
CHECKED		
Tolerances:		
x.x ± .04 in		
x.xx ± .02 in		
x.xxx ± .005 in		
MATERIAL		



TITLE
**Stage - Linear, 50mm Air
 Bearing, Dual HR4**

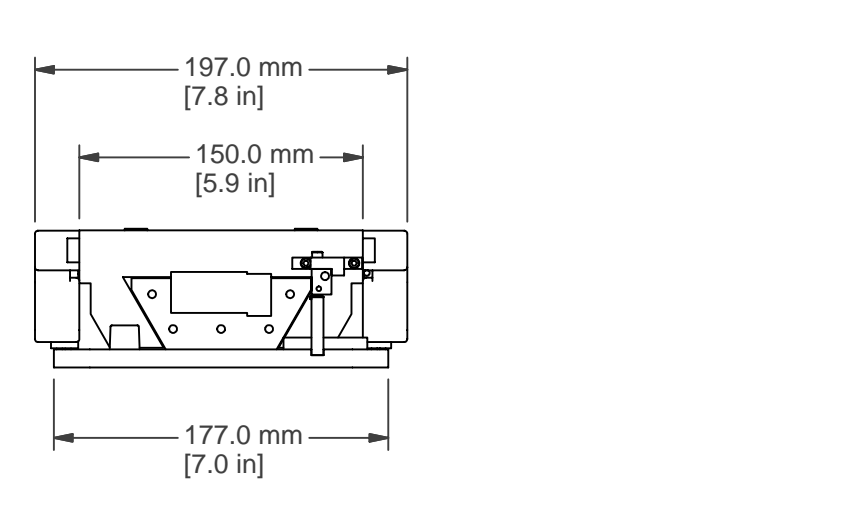
SIZE	DWG NO	REV
B	Dual HR4-5000E-AB	001
SCALE	SHEET 1 OF 1	



AIR QUALITY
 AIR SUPPLY MUST BE FREE OF CONTAMINANTS AND MOISTURE. FILTERED AIR SUPPLY TO ISO 8573.1 QUALITY CLASS 3

CLASS: 3 (RECOMMENDED)
 DIRT: 5 MICRON PARTICAL SIZE OR SMALLER
 WATER: -4 F, PRESSURE DEWPOINT (128 ppm. vol.) AT 100 psig
 OIL: 1.0 mg/m**3 (INCLUDING VAPOR)

CLASS: 4 (MINIMUM)
 DIRT: 15 MICRON PARTICAL SIZE OR SMALLER
 WATER: +37.4 F, PRESSURE DEWPOINT (940 ppm. vol.) AT 100 psig
 OIL: 5 mg/m**3 (INCLUDING VAPOR)



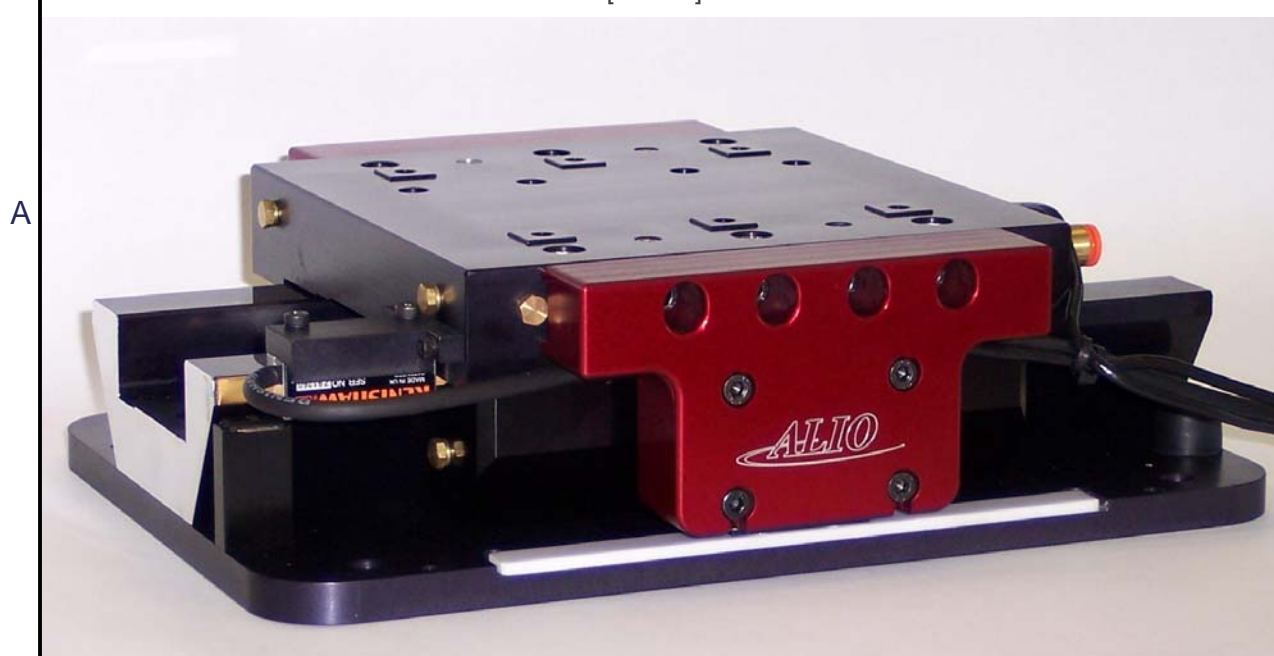
STANDARD FEATURES
 MOTORS: DUAL HR-4, MAX FORCE 30 to 36 N
 TRAVEL: 100mm
 SPEED: 250mm/sec MAX.
 ENCODER OUTPUT: ANALOG 1 Vp-p (STANDARD)
 OPTIONAL: 5um, 1um, 0.5um, 0.1um, 50nm, 20nm, 10nm or 5nm USING 4096 INTERPOLATION (NOTE 1.)
 SYSTEM REPEATABILITY: +/- 1 ENCODER COUNT (NOTE 1.)
 HOME SENSOR: STANDARD
 BEARINGS: PRECISION AIR BEARING
 REFER TO AIR PURITY SPECIFICATION
 OPERATING PRESSURE: 60 PSIG TO 80 PSIG, 120 PSIG Max.
 MAXIMUM LOAD RATING: 750N (@ 60 psig)
 HORIZONTAL STRAIGHTNESS: 5 micro-inch /inch
 VERTICAL STRAIGHTNESS: 5 micro-inch /inch
 HORIZONTAL STIFFNESS: 105*10e6 N/m (600,000 lbs/in)
 VERTICAL STIFFNESS: 140*10e6 N/m (800,000 lbs/in)
 ENCLOSURES: ALUMINUM
 ATMOSPHERES: STANDARD & CLEAN ROOM
 TEMPERATURE: 10 to 35 DEG C
 HUMIDITY: 10% to 80% NON-CONDENSING

NOTE 1 - FOR OPTIMAL AXIS PERFORMANCE, ALIO RECOMMENDS THE USAGE OF A DELTA TAU PMAC2A-PC/104 CONTROLLER WITH THE DELTA TAU ACCESSORY ACC-51S: 4096x SINUSOIDAL INTERPOLATOR.

ACCESSORIES
 MOTOR AMPLIFIER (AB5A-E8)

OPTIONAL EQUIPMENT
 MOTION CONTROLLERS
 ENCODER INTERPOLATION, DESCRETE VALUE

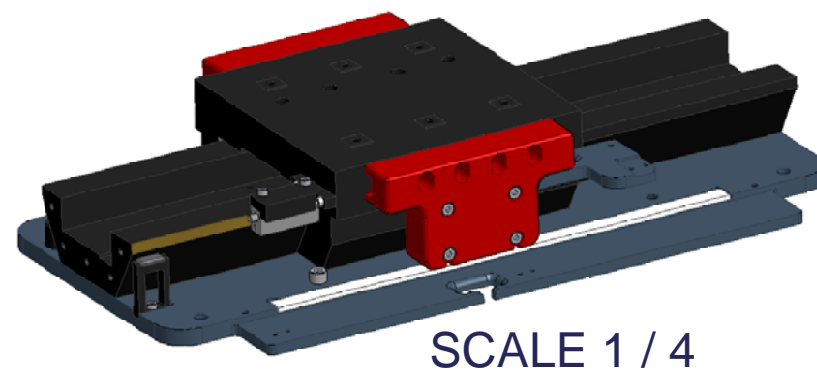
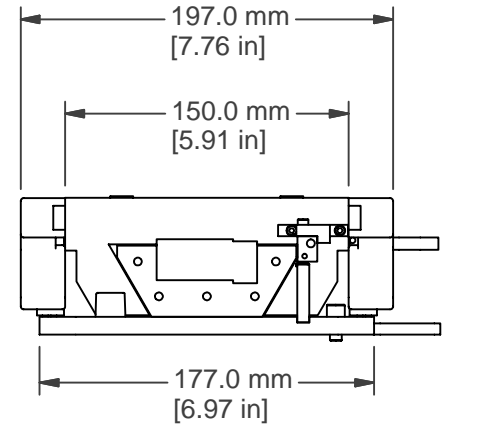
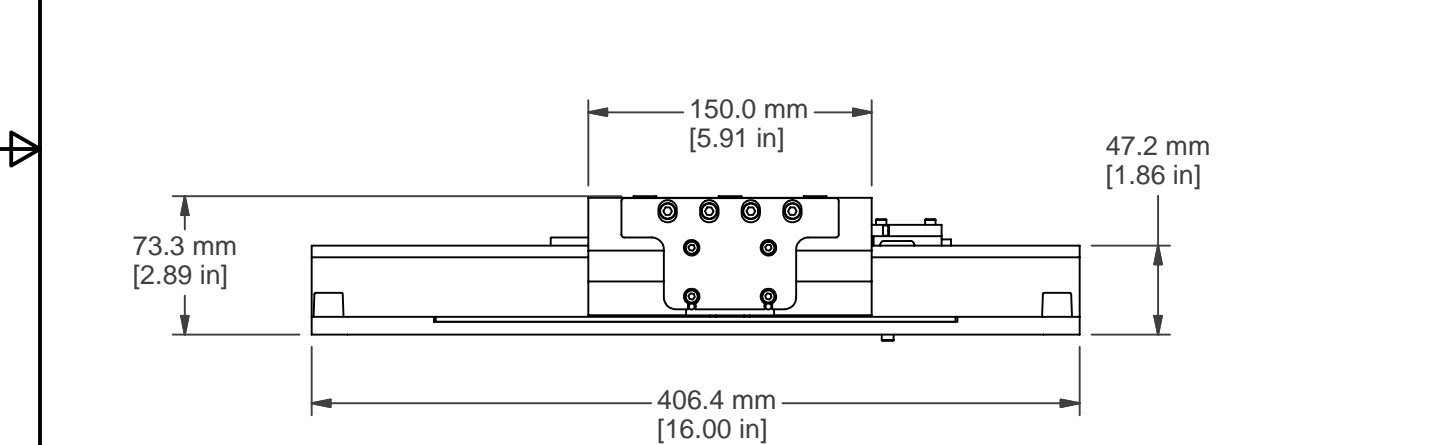
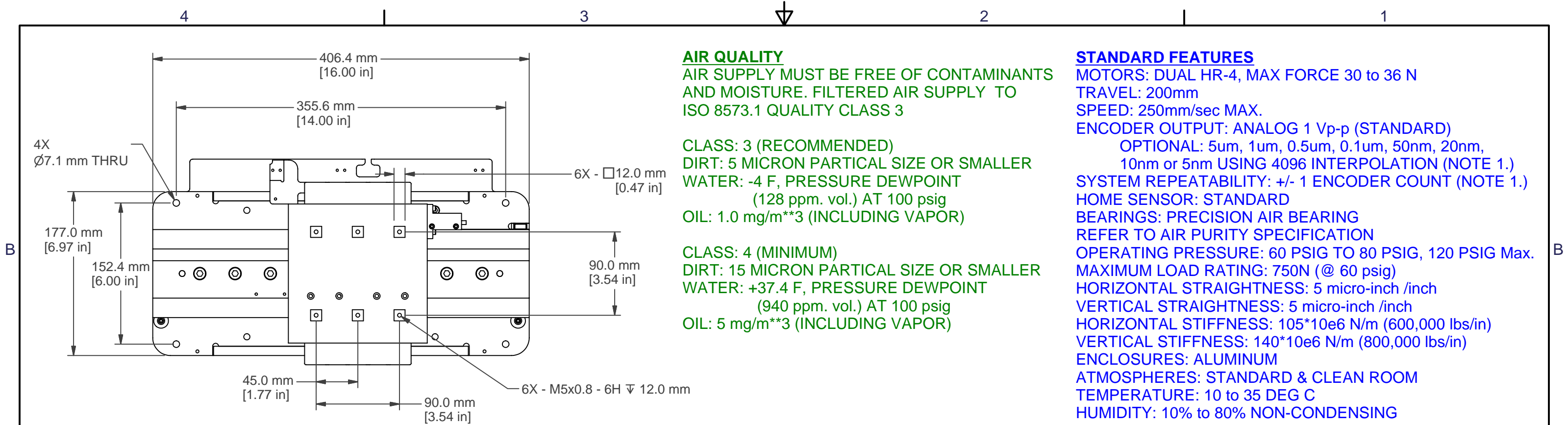
CUSTOM DESIGNS FOR OEM INTEGRATION



ALIO INDUSTRIES
 11919 W I-70 FRONTAGE ROAD NORTH, UNIT 119
 WHEAT RIDGE, COLORADO 80033 USA
 (T) 303-339-7500 www.alioindustries.com

USE IN-LINE PRESSURE SWITCH TO KILL MOTOR POWER IF AIR PRESSURE DROPS BELOW RATED OPERATING VALUE
DO NOT OPERATE UNLESS AIR PRESSURE IS APPLIED!

DRAWN Dan Crews 10/12/2004			
CHECKED			
Tolerances: x.x ± .04 in x.xx ± .02 in x.xxx ± .005 in		TITLE Stage - Linear, 100mm Air Bearing, Dual HR4	
MATERIAL		SIZE B	REV 000
SCALE		DWG NO Dual HR4-10000E-AB	SHEET 1 OF 1



AIR QUALITY
 AIR SUPPLY MUST BE FREE OF CONTAMINANTS AND MOISTURE. FILTERED AIR SUPPLY TO ISO 8573.1 QUALITY CLASS 3

CLASS: 3 (RECOMMENDED)
 DIRT: 5 MICRON PARTICAL SIZE OR SMALLER
 WATER: -4 F, PRESSURE DEWPOINT (128 ppm. vol.) AT 100 psig
 OIL: 1.0 mg/m**3 (INCLUDING VAPOR)

CLASS: 4 (MINIMUM)
 DIRT: 15 MICRON PARTICAL SIZE OR SMALLER
 WATER: +37.4 F, PRESSURE DEWPOINT (940 ppm. vol.) AT 100 psig
 OIL: 5 mg/m**3 (INCLUDING VAPOR)

STANDARD FEATURES
 MOTORS: DUAL HR-4, MAX FORCE 30 to 36 N
 TRAVEL: 200mm
 SPEED: 250mm/sec MAX.
 ENCODER OUTPUT: ANALOG 1 Vp-p (STANDARD)
 OPTIONAL: 5um, 1um, 0.5um, 0.1um, 50nm, 20nm, 10nm or 5nm USING 4096 INTERPOLATION (NOTE 1.)
 SYSTEM REPEATABILITY: +/- 1 ENCODER COUNT (NOTE 1.)
 HOME SENSOR: STANDARD
 BEARINGS: PRECISION AIR BEARING
 REFER TO AIR PURITY SPECIFICATION
 OPERATING PRESSURE: 60 PSIG TO 80 PSIG, 120 PSIG Max.
 MAXIMUM LOAD RATING: 750N (@ 60 psig)
 HORIZONTAL STRAIGHTNESS: 5 micro-inch /inch
 VERTICAL STRAIGHTNESS: 5 micro-inch /inch
 HORIZONTAL STIFFNESS: 105*10e6 N/m (600,000 lbs/in)
 VERTICAL STIFFNESS: 140*10e6 N/m (800,000 lbs/in)
 ENCLOSURES: ALUMINUM
 ATMOSPHERES: STANDARD & CLEAN ROOM
 TEMPERATURE: 10 to 35 DEG C
 HUMIDITY: 10% to 80% NON-CONDENSING

NOTE 1 - FOR OPTIMAL AXIS PERFORMANCE, ALIO RECOMMENDS THE USAGE OF A DELTA TAU PMAC2A-PC/104 CONTROLLER WITH THE DELTA TAU ACCESSORY ACC-51S: 4096x SINUSOIDAL INTERPOLATOR.

ACCESSORIES
 MOTOR AMPLIFIER (AB5A-E8)

OPTIONAL EQUIPMENT
 MOTION CONTROLLERS
 ENCODER INTERPOLATION, DESCRETE VALUE

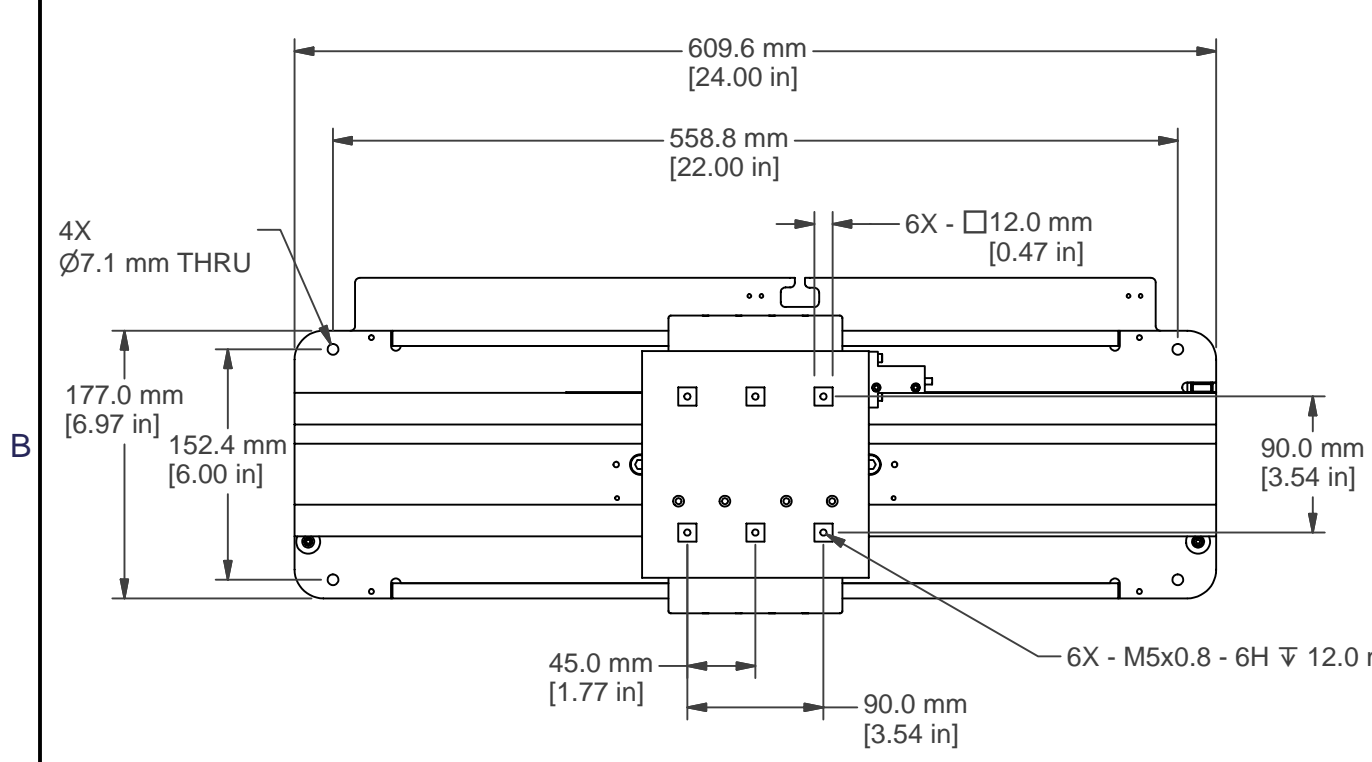
CUSTOM DESIGNS FOR OEM INTEGRATION

USE IN-LINE PRESSURE SWITCH TO KILL MOTOR POWER IF AIR PRESSURE DROPS BELOW RATED OPERATING VALUE

DO NOT OPERATE UNLESS AIR PRESSURE IS APPLIED!

ALIO INDUSTRIES
 11919 W I-70 FRONTAGE ROAD NORTH, UNIT 119
 WHEAT RIDGE, COLORADO 80033 USA
 (T) 303-339-7500 www.alioindustries.com

DRAWN Dan Crews 10/12/2004			
CHECKED			
Tolerances: x.x ± .04 in x.xx ± .02 in x.xxx ± .005 in		TITLE Stage - Linear, 200mm Air Bearing, Dual HR4	
MATERIAL		SIZE B	REV 000
		DWG NO Dual HR4-20000E-AB	
SCALE		SHEET 1 OF 1	

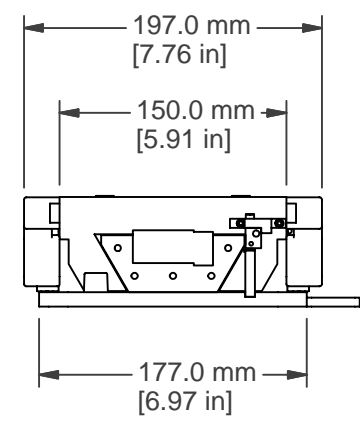
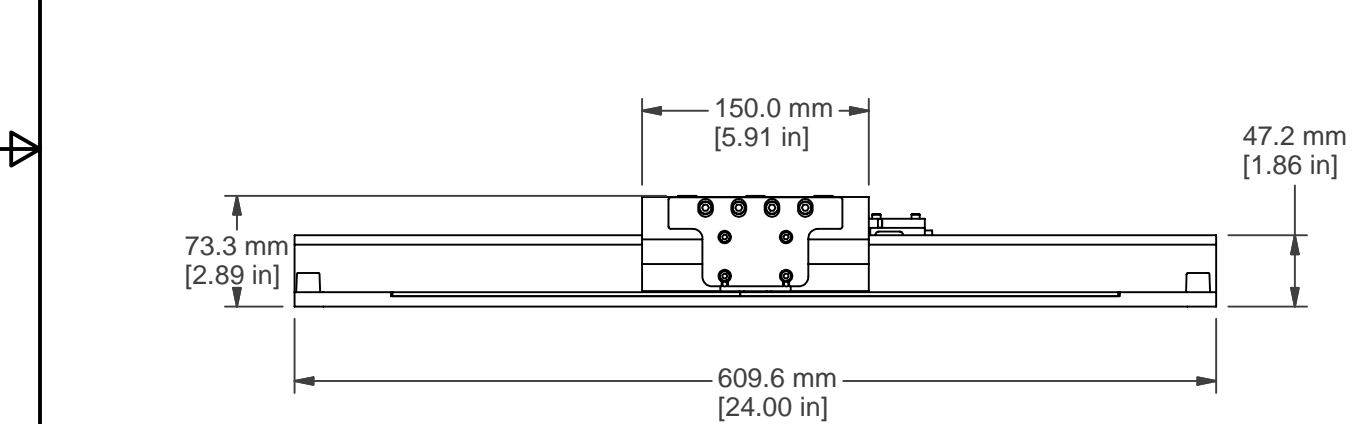


AIR QUALITY
 AIR SUPPLY MUST BE FREE OF CONTAMINANTS AND MOISTURE. FILTERED AIR SUPPLY TO ISO 8573.1 QUALITY CLASS 3

CLASS: 3 (RECOMMENDED)
 DIRT: 5 MICRON PARTICAL SIZE OR SMALLER
 WATER: -4 F, PRESSURE DEWPOINT (128 ppm. vol.) AT 100 psig
 OIL: 1.0 mg/m³ (INCLUDING VAPOR)

CLASS: 4 (MINIMUM)
 DIRT: 15 MICRON PARTICAL SIZE OR SMALLER
 WATER: +37.4 F, PRESSURE DEWPOINT (940 ppm. vol.) AT 100 psig
 OIL: 5 mg/m³ (INCLUDING VAPOR)

STANDARD FEATURES
 MOTORS: DUAL HR-4, MAX FORCE 30 to 36 N
 TRAVEL: 400mm
 SPEED: 250mm/sec MAX.
 ENCODER OUTPUT: ANALOG 1 Vp-p (STANDARD)
 OPTIONAL: 5um, 1um, 0.5um, 0.1um, 50nm, 20nm, 10nm or 5nm USING 4096 INTERPOLATION (NOTE 1.)
 SYSTEM REPEATABILITY: +/- 1 ENCODER COUNT (NOTE 1.)
 HOME SENSOR: STANDARD
 BEARINGS: PRECISION AIR BEARING
 REFER TO AIR PURITY SPECIFICATION
 OPERATING PRESSURE: 60 PSIG TO 80 PSIG, 120 PSIG Max.
 MAXIMUM LOAD RATING: 750N (@ 60 psig)
 HORIZONTAL STRAIGHTNESS: 5 micro-inch /inch
 VERTICAL STRAIGHTNESS: 5 micro-inch /inch
 HORIZONTAL STIFFNESS: 105*10e6 N/m (600,000 lbs/in)
 VERTICAL STIFFNESS: 140*10e6 N/m (800,000 lbs/in)
 ENCLOSURES: ALUMINUM
 ATMOSPHERES: STANDARD & CLEAN ROOM
 TEMPERATURE: 10 to 35 DEG C
 HUMIDITY: 10% to 80% NON-CONDENSING



NOTE 1 - FOR OPTIMAL AXIS PERFORMANCE, ALIO RECOMMENDS THE USAGE OF A DELTA TAU PMAC2A-PC/104 CONTROLLER WITH THE DELTA TAU ACCESSORY ACC-51S: 4096x SINUSOIDAL INTERPOLATOR.

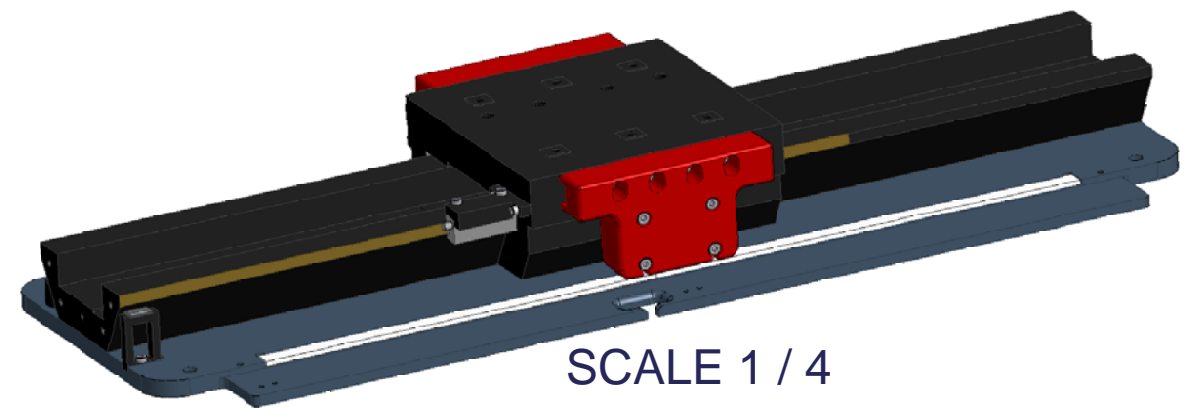
ACCESSORIES
 MOTOR AMPLIFIER (AB5A-E8)

OPTIONAL EQUIPMENT
 MOTION CONTROLLERS
 ENCODER INTERPOLATION, DESCRETE VALUE

CUSTOM DESIGNS FOR OEM INTEGRATION

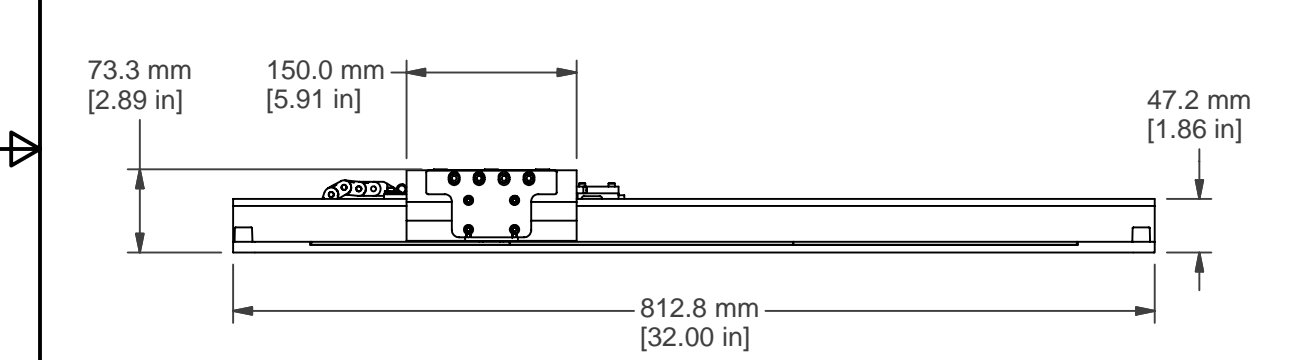
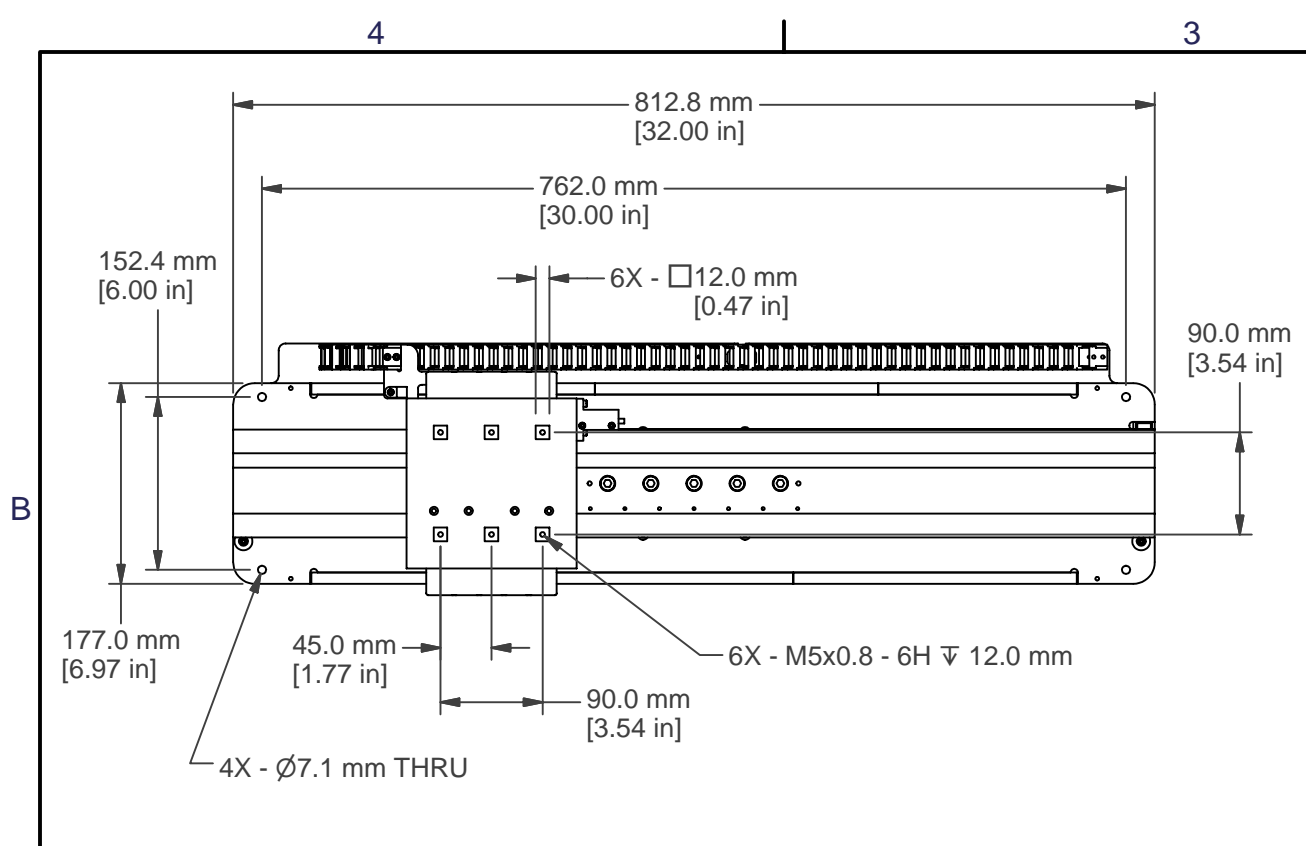
USE IN-LINE PRESSURE SWITCH TO KILL MOTOR POWER IF AIR PRESSURE DROPS BELOW RATED OPERATING VALUE

DO NOT OPERATE UNLESS AIR PRESSURE IS APPLIED!



ALIO INDUSTRIES
 11919 W I-70 FRONTAGE ROAD NORTH, UNIT 119
 WHEAT RIDGE, COLORADO 80033 USA
 (T) 303-339-7500 www.alioindustries.com

DRAWN Dan Crews 10/12/2004			
CHECKED			
Tolerances: x.x ± .04 in x.xx ± .02 in x.xxx ± .005 in		TITLE Stage - Linear, 400mm Air Bearing, Dual HR4	
MATERIAL		SIZE B	REV 000
		DWG NO Dual HR4-40000E-AB	
SCALE		SHEET 1 OF 1	



AIR QUALITY
 AIR SUPPLY MUST BE FREE OF CONTAMINANTS AND MOISTURE. FILTERED AIR SUPPLY TO ISO 8573.1 QUALITY CLASS 3

CLASS: 3 (RECOMMENDED)
 DIRT: 5 MICRON PARTICAL SIZE OR SMALLER
 WATER: -4 F, PRESSURE DEWPOINT (128 ppm. vol.) AT 100 psig
 OIL: 1.0 mg/m**3 (INCLUDING VAPOR)

CLASS: 4 (MINIMUM)
 DIRT: 15 MICRON PARTICAL SIZE OR SMALLER
 WATER: +37.4 F, PRESSURE DEWPOINT (940 ppm. vol.) AT 100 psig
 OIL: 5 mg/m**3 (INCLUDING VAPOR)

STANDARD FEATURES
 MOTORS: DUAL HR-4, MAX FORCE 30 to 36 N
 TRAVEL: 600mm
 SPEED: 250mm/sec MAX.
 ENCODER OUTPUT: ANALOG 1 Vp-p (STANDARD)
 OPTIONAL: 5um, 1um, 0.5um, 0.1um, 50nm, 20nm, 10nm or 5nm USING 4096 INTERPOLATION (NOTE 1.)
 SYSTEM REPEATABILITY: +/- 1 ENCODER COUNT (NOTE 1.)
 HOME SENSOR: STANDARD
 BEARINGS: PRECISION AIR BEARING
 REFER TO AIR PURITY SPECIFICATION
 OPERATING PRESSURE: 60 PSIG TO 80 PSIG, 120 PSIG Max.
 MAXIMUM LOAD RATING: 750N (@ 60 psig)
 HORIZONTAL STRAIGHTNESS: 5 micro-inch /inch
 VERTICAL STRAIGHTNESS: 5 micro-inch /inch
 HORIZONTAL STIFFNESS: 105*10e6 N/m (600,000 lbs/in)
 VERTICAL STIFFNESS: 140*10e6 N/m (800,000 lbs/in)
 ENCLOSURES: ALUMINUM
 ATMOSPHERES: STANDARD & CLEAN ROOM
 TEMPERATURE: 10 to 35 DEG C
 HUMIDITY: 10% to 80% NON-CONDENSING

NOTE 1 - FOR OPTIMAL AXIS PERFORMANCE, ALIO RECOMMENDS THE USAGE OF A DELTA TAU PMAC2A-PC/104 CONTROLLER WITH THE DELTA TAU ACCESSORY ACC-51S: 4096x SINUSOIDAL INTERPOLATOR.

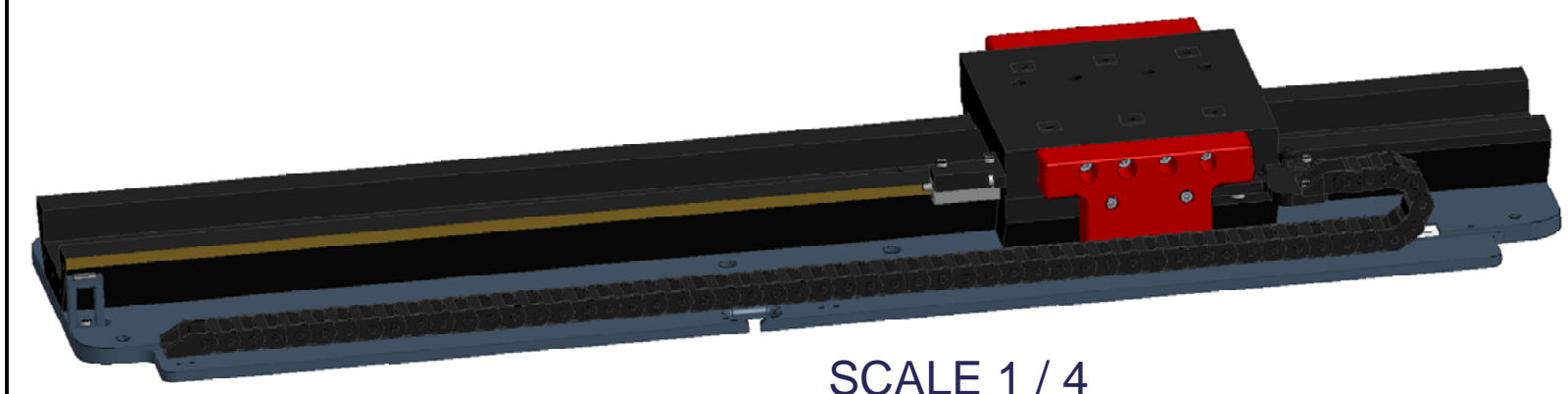
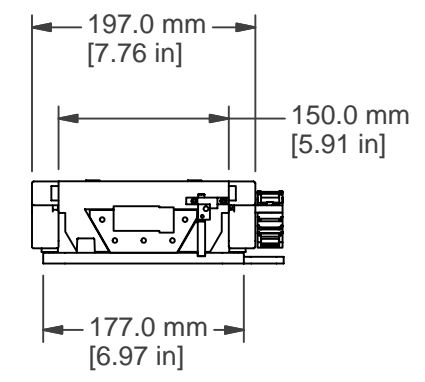
ACCESSORIES
 MOTOR AMPLIFIER (AB5A-E8)

OPTIONAL EQUIPMENT
 MOTION CONTROLLERS
 ENCODER INTERPOLATION, DESCRETE VALUE

CUSTOM DESIGNS FOR OEM INTEGRATION

USE IN-LINE PRESSURE SWITCH TO KILL MOTOR POWER IF AIR PRESSURE DROPS BELOW RATED OPERATING VALUE

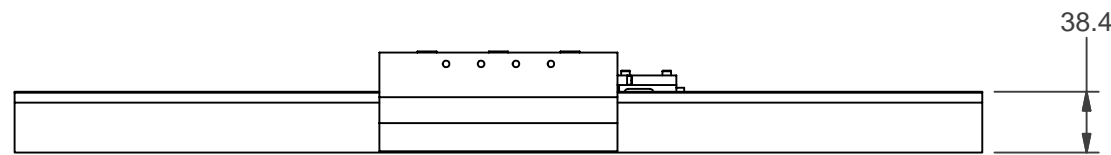
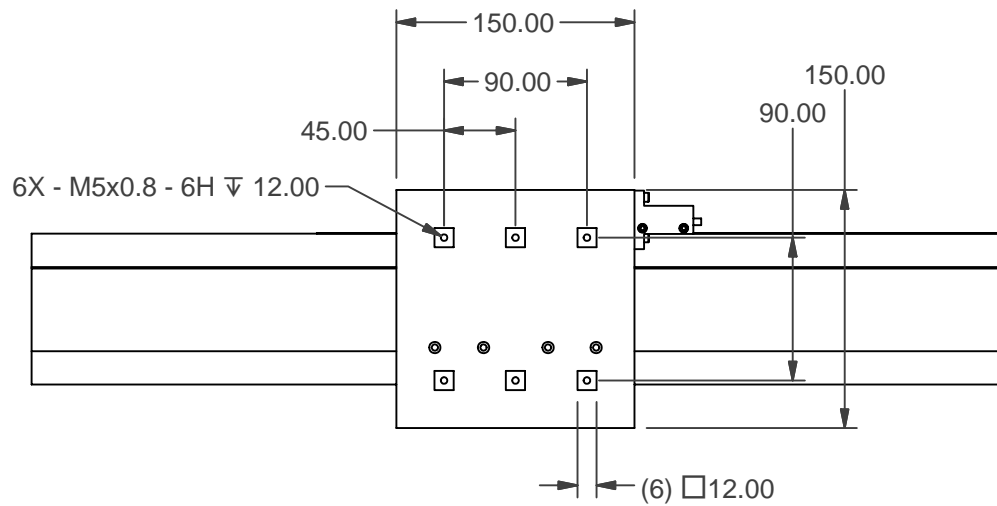
DO NOT OPERATE UNLESS AIR PRESSURE IS APPLIED!



SCALE 1 / 4

ALIO INDUSTRIES
 11919 W I-70 FRONTAGE ROAD NORTH, UNIT 119
 WHEAT RIDGE, COLORADO 80033 USA
 (T) 303-339-7500 www.alioindustries.com

DRAWN Dan Crews 10/12/2004			
CHECKED			
Tolerances: x.x ± .04 in x.xx ± .02 in x.xxx ± .005 in		TITLE Stage - Linear, 600mm Air Bearing, Dual HR4	
MATERIAL		SIZE B	REV 000
		DWG NO Dual HR4-60000E-AB	
SCALE		SHEET 1 OF 1	



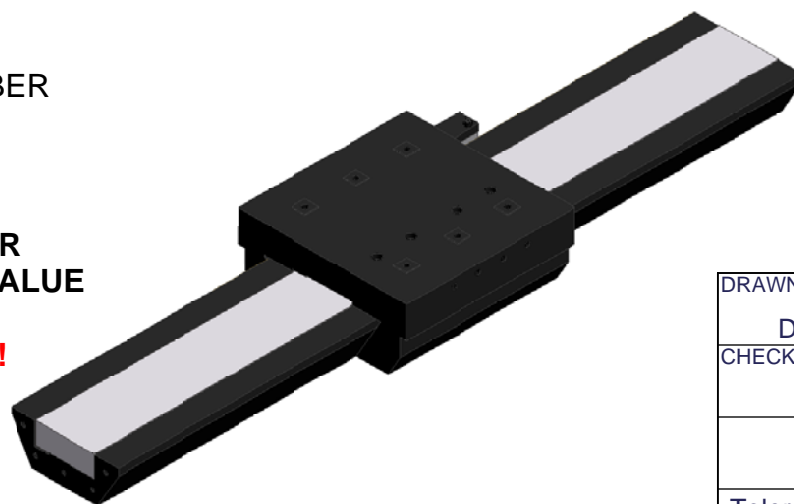
SLIDE TRAVEL*	OVER ALL LENGTH
100mm	310mm
200mm	410mm
400mm	610mm
600mm	815mm

LENGTHS AVAILABLE TO GREATER THAN 2 METERS, PLEASE CONSULT FACTORY

* REPRESENTS "XYZ" IN THE PART NUMBER

USE IN-LINE PRESSURE SWITCH TO KILL MOTOR POWER IF AIR PRESSURE DROPS BELOW RATED OPERATING VALUE

DO NOT OPERATE UNLESS AIR PRESSURE IS APPLIED!



ALIO INDUSTRIES
11919 W I-70 FRONTAGE ROAD NORTH, UNIT 119
WHEAT RIDGE, COLORADO 80033 USA
(T) 303-339-7500 www.alioindustries.com

ALIO INDUSTRIES PROPRIETARY INFORMATION

AIR QUALITY

AIR SUPPLY MUST BE FREE OF CONTAMINANTS AND MOISTURE. FILTERED AIR SUPPLY TO ISO 8573.1 QUALITY CLASS 3

CLASS: 3 (RECOMMENDED)

DIRT: 5 MICRON PARTICAL SIZE OR SMALLER
WATER: -4 F, PRESSURE DEWPOINT (128 ppm. vol.) AT 100 psig
OIL: 1.0 mg/m**3 (INCLUDING VAPOR)

CLASS: 4 (MINIMUM)

DIRT: 15 MICRON PARTICAL SIZE OR SMALLER
WATER: +37.4 F, PRESSURE DEWPOINT (940 ppm. vol.) AT 100 psig
OIL: 5 mg/m**3 (INCLUDING VAPOR)

STANDARD FEATURES

MOTOR: 200 N FORCE LINEAR MOTOR
INCLUDES: DIGITAL HALL EFFECT DEVICE
THERMISTOR, THERMOSTAT, HIGH FLEX CABLE
STANDARD TRAVEL: 100, 200, 400 AND 600mm
LONG TRAVEL: >2 METER TRAVEL AVAILABLE
SPEED: >1 meter/second
(ENCODER RESOLUTION AND COUNTER CLOCK FREQUENCY DEPENDANT)
ENCODER OUTPUT: ANALOG 1 Vp-p (STANDARD)
OPTIONAL: 5um, 1um, 0.5um, 0.1um, 50nm, 20nm, 10nm or 5nm USING 4096 INTERPOLATION (NOTE 1.)
SYSTEM REPEATABILITY: +/- 1 ENCODER COUNT (NOTE 1.)
HOME SENSOR: STANDARD
BEARINGS: PRECISION AIR BEARING
REFER TO AIR PURITY SPECIFICATION
OPERATING PRESSURE: 60 PSIG TO 80 PSIG, 120 PSIG Max.
MAXIMUM LOAD RATING: 750N (@ 60 psig)
HORIZONTAL STRAIGHTNESS: 5 micro-inch /inch
VERTICAL STRAIGHTNESS: 5 micro-inch /inch
HORIZONTAL STIFFNESS: >1,000,000 lbs/in
VERTICAL STIFFNESS: >1,000,000 lbs/in
ENCLOSURES: ALUMINUM
ATMOSPHERES: STANDARD & CLEAN ROOM
TEMPERATURE: 10 to 35 DEG C
HUMIDITY: 10% to 80% NON-CONDENSING

NOTE 1 - FOR OPTIMAL AXIS PERFORMANCE, ALIO RECOMMENDS THE USAGE OF A DELTA TAU PMAC2A-PC/104 CONTROLLER WITH THE DELTA TAU ACCESSORY ACC-51S: 4096x SINUSOIDAL INTERPOLATOR.

ACCESSORIES

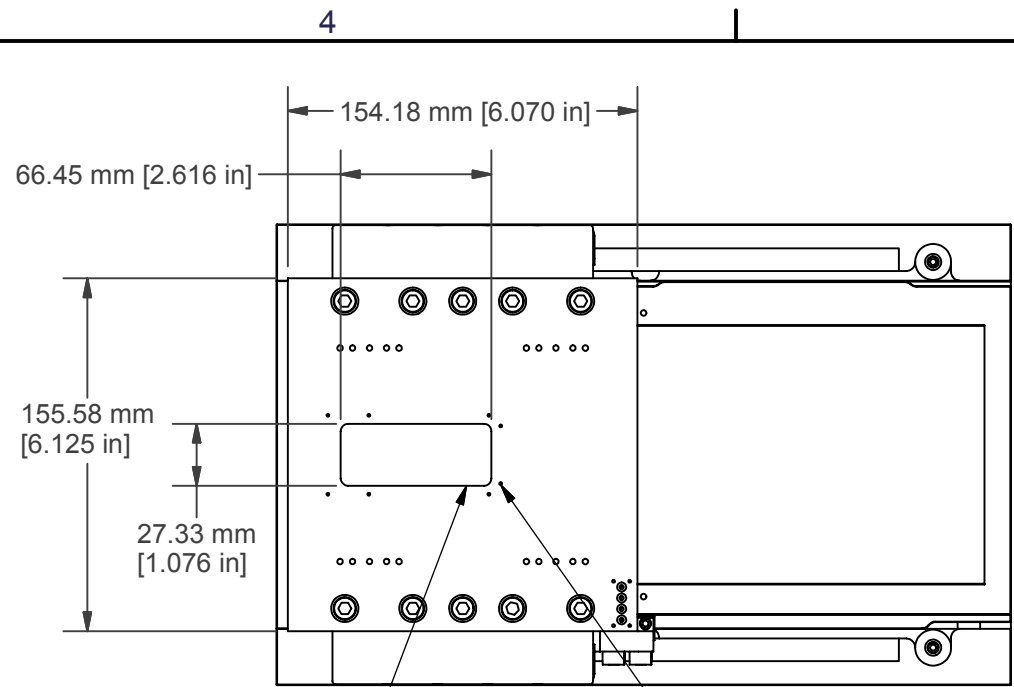
MOTOR AMPLIFIER

OPTIONAL EQUIPMENT

MOTION CONTROLLERS
ENCODER INTERPOLATION, DESCRETE VALUE

CUSTOM DESIGNS FOR OEM INTEGRATION

DRAWN Dan Crews 3/9/2005			
CHECKED			
Tolerances: x.x ± .04 in x.xx ± .02 in x.xxx ± .005 in		TITLE STAGE - LINEAR AIR BEARING, HIGH FORCE	
MATERIAL		SIZE B	DWG NO AI-L12-(XYZ)00-AB
SCALE		REV	
SHEET 1 OF 1		SHEET 1 OF 1	



APERTURE IN CARRIAGE
CUSTOM MOUNTING FEATURES AVAILABLE

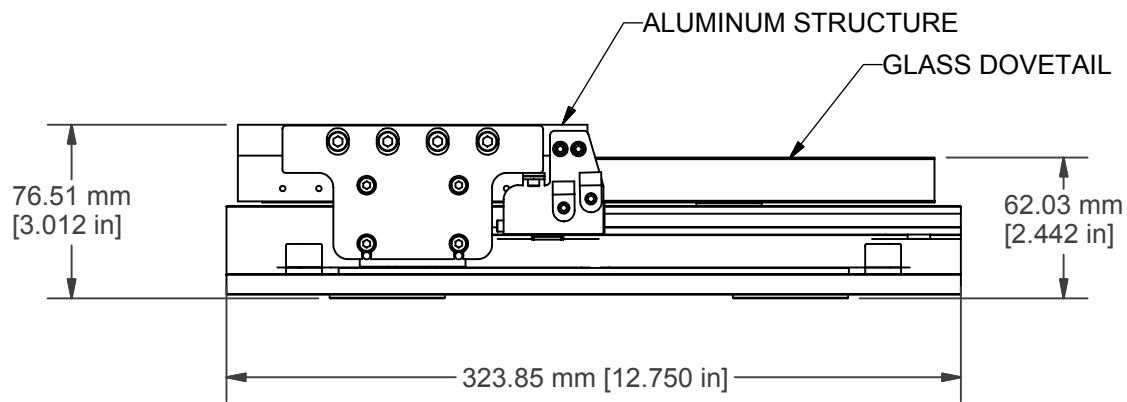
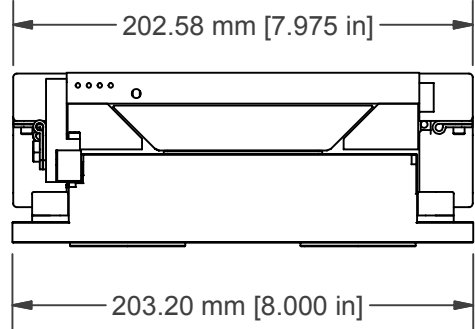
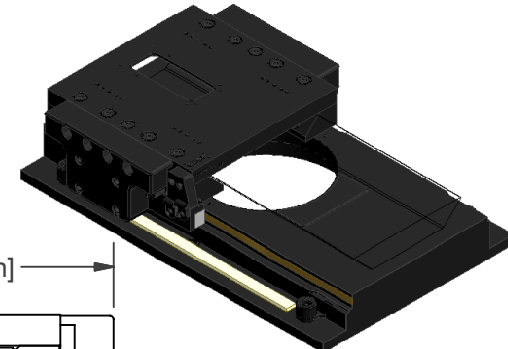
AIR QUALITY
AIR SUPPLY MUST BE FREE OF CONTAMINANTS AND MOISTURE. FILTERED AIR SUPPLY TO ISO 8573.1 QUALITY CLASS 3

CLASS: 3 (RECOMMENDED)
DIRT: 5 MICRON PARTICAL SIZE OR SMALLER
WATER: -4 F, PRESSURE DEWPOINT (128 ppm. vol.) AT 100 psig
OIL: 1.0 mg/m**3 (INCLUDING VAPOR)

CLASS: 4 (MINIMUM)
DIRT: 15 MICRON PARTICAL SIZE OR SMALLER
WATER: +37.4 F, PRESSURE DEWPOINT (940 ppm. vol.) AT 100 psig
OIL: 5 mg/m**3 (INCLUDING VAPOR)

STANDARD FEATURES
MOTORS: DUAL HR-4, MAX FORCE 30 to 36 N
TRAVEL: 150mm
SPEED: 250mm/sec MAX.
ENCODER OUTPUT: ANALOG 1 Vp-p (STANDARD)
OPTIONAL: 5um, 1um, 0.5um, 0.1um, 50nm, 20nm, 10nm or 5nm USING 4096 INTERPOLATION (NOTE 1.)
SYSTEM REPEATABILITY: +/- 1 ENCODER COUNT (NOTE 1.)
LIMIT SWITCH SENSOR: STANDARD
BEARINGS: PRECISION AIR BEARING
REFER TO AIR PURITY SPECIFICATION
OPERATING PRESSURE: 60 PSIG TO 80 PSIG, 120 PSIG Max.
MAXIMUM LOAD RATING: 750N (@ 60 psig)
HORIZONTAL STRAIGHTNESS: 5 micro-inch /inch
VERTICAL STRAIGHTNESS: 5 micro-inch /inch
HORIZONTAL STIFFNESS: 105*10e6 N/m (600,000 lbs/in)
VERTICAL STIFFNESS: 140*10e6 N/m (800,000 lbs/in)
ENCLOSURES: ALUMINUM & GLASS
ATMOSPHERES: STANDARD & CLEAN ROOM
TEMPERATURE: 10 to 35 DEG C
HUMIDITY: 10% to 80% NON-CONDENSING

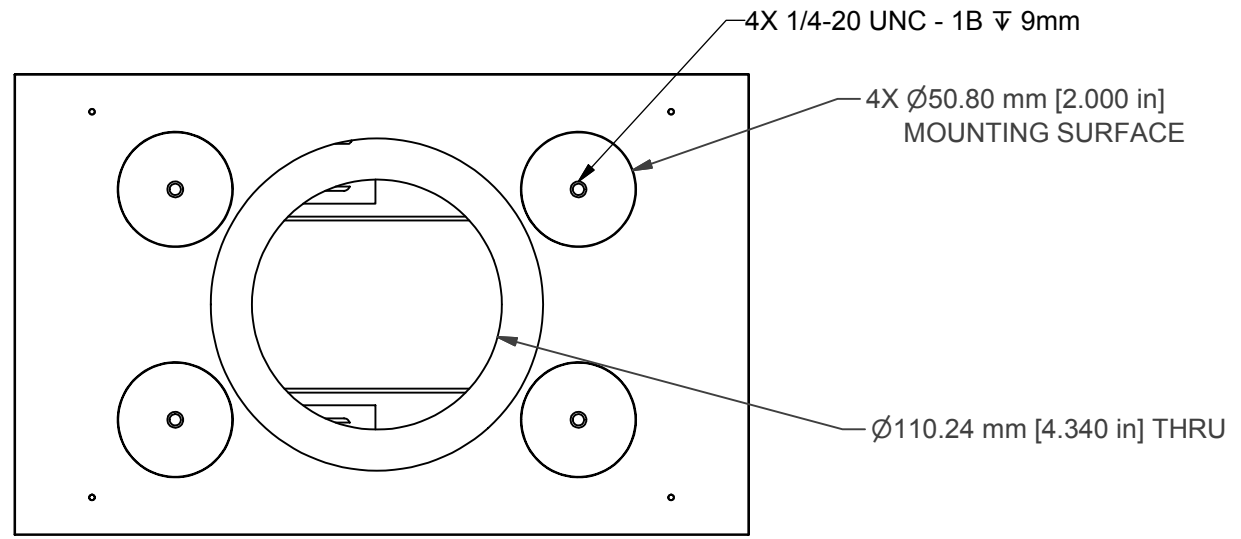
NOTE 1 - FOR OPTIMAL AXIS PERFORMANCE, ALIO RECOMMENDS THE USAGE OF A DELTA TAU PMAC2A-PC/104 CONTROLLER WITH THE DELTA TAU ACCESSORY ACC-51S: 4096x SINUSOIDAL INTERPOLATOR.



ACCESSORIES
MOTOR AMPLIFIER

OPTIONAL EQUIPMENT
MOTION CONTROLLERS
ENCODER INTERPOLATION, DESCRETE VALUE

CUSTOM DESIGNS FOR OEM INTEGRATION



ALIO INDUSTRIES PROPRIETARY INFORMATION
11919 W I-70 FRONTAGE ROAD NORTH, UNIT 119, WHEAT RIDGE, CO 80033 USA
(Tel) 303.339.7500 - SALES@ALIOINDUSTRIES.COM - WWW.ALIOINDUSTRIES.COM



AI-D4-15000E-AB-GLOSS

DRAWN		10/26/2005		TITLE	
NBROWN					
CHECKED				AI-D4-15000E-AB-GLOSS	
Tolerances:		Surface Roughness:			
x.x ± .04 in		RMS MAX.			
x.xx ± .02 in				SIZE	
x.xxx ± .005 in				DWG NO	
MATERIAL				0010-00570	
FINISH		SEE NOTES		REV	
				001	
SCALE		ALIO STD TEMPLATE - REV 005		SHEET 1 OF 1	