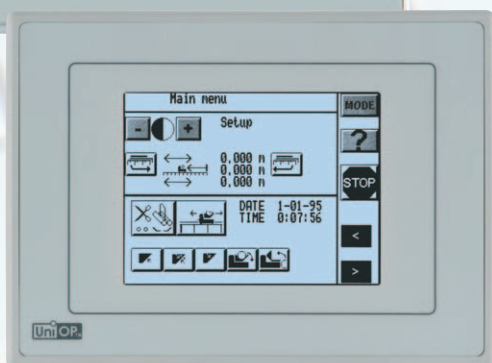


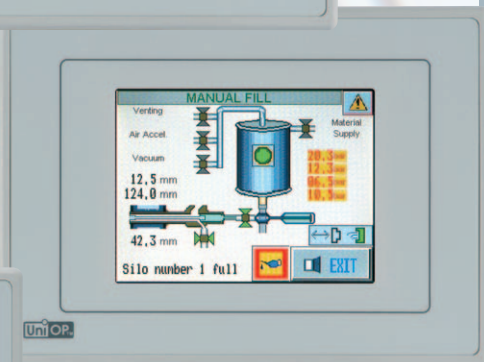
eTOP11/10B - 5.6"
STN/TFT



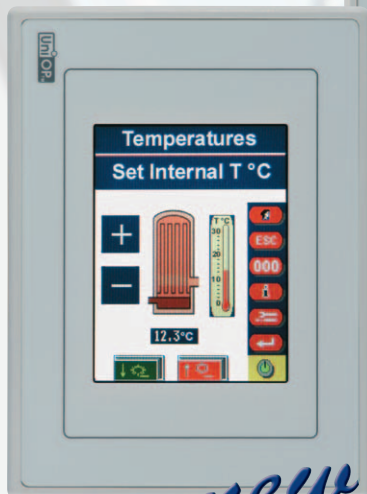
eTOP05 - 5.6"
monochrome



eTOP03 - 3.8"
monochrome



eTOP02 - 3.5" - TFT



ENTRY LEVEL TOUCH

Technical Data

Communication:

200 drivers, 11 fieldbuses
Dual driver

Display:

Type
Colors
Diagonal (inch)
Lines x characters
Resolution
Definable characters
Dimming

Operator Interface:

Touchscreen

Memory:

User Memory (Flash)
Flash card option
Recipe memory

Interface:

PLC Port
Programming/Printer Port
UniNet (server and client)
Aux port (optional fieldbus/Ethernet)
Ethernet programming
Serial PLC Communication

Functions:

Graphic
Video Input Option
Trend acquisition and display
Battery
Real Time Clock
Password
Alarms
Event list

Power Supply:

Voltage
Current rating (at 24 VDC)

Environment:

Degree of protection (front panel)
Temperature range (vertical installation)

Dimensions:

Front L x H mm / inches
Cutout L x H mm / inches
Weight

Approvals:

Programming:

	eTOP02	eTOP03	eTOP05	eTOP11	eTOP10B
yes	yes	yes	yes	yes	yes
yes	yes	yes	yes	yes	yes
TFT Color	LCD monochrome	LCD monochrome	STN Color	TFT Color	
256	-	-	16	64K	
3,5"	3,8"	5,6"	5,6"	5,6"	
-	-	-	-	-	
320 x 240 - 1/4 VGA	320 x 240 - 1/4 VGA	320 x 240 - 1/4 VGA	320 x 240 - 1/4 VGA	320 x 240 - 1/4 VGA	320 x 240 - 1/4 VGA
256	256	256	256	256	TTF
yes	-	-	-	-	yes
yes	yes	yes	yes	yes	yes
1 MB	512KB	32 MB	32 MB	32 MB	32 MB
-	-	yes	yes	yes	yes
32KB	32KB	32KB	32KB	32KB	32KB
RS-232, RS-485	RS-232, RS-485	RS-232, RS-485, CL	RS-232, RS-485, CL	RS-232, RS-485, CL	RS-232, RS-485, CL
-	-	yes	yes	yes	yes
yes	yes	yes	yes	yes	yes
yes	yes	yes	yes	yes	yes
yes	yes	yes	yes	yes	yes
38.400Bd	38.400Bd	38.400Bd	38.400Bd	38.400Bd	38.400Bd
yes	yes	yes	yes	yes	yes
-	-	-	-	-	yes
-	-	yes	yes	yes	yes
yes	yes	yes	yes	yes	yes
yes	yes	yes	yes	yes	yes
yes	yes	yes	yes	yes	yes
1024	1024	1024	1024	1024	1024
256	256	1024	1024	1024	1024
18 - 30 VDC	18 - 30 VDC	18 - 30 VDC	18 - 30 VDC	18 - 30 VDC	18 - 30 VDC
0.4 A	0.4 A	0.6 A	0.6 A	0.6 A	0.6 A
IP65, NEMA 4X	IP65, NEMA 4X	IP65, NEMA 4X	IP65, NEMA 4X	IP65, NEMA 4X	IP65, NEMA 4X
0 - 50°C	0 - 50°C	0 - 50°C	0 - 45°C	0 - 45°C	0 - 45°C
149x109 / 5.86x4.29	149x109 / 5.86x4.29	187x147 / 7.36x5.78	187x147 / 7.36x5.78	187x147 / 7.36x5.78	187x147 / 7.36x5.78
136x96 / 5.35x3.78	136x96 / 5.35x3.78	176x136 / 6.93x5.35	176x136 / 6.93x5.35	176x136 / 6.93x5.35	176x136 / 6.93x5.35
1 Kg	1 Kg	1.4 Kg	1.4 Kg	1.4 Kg	1.4 Kg
CE, cULus	CE, cULus, Class I Div 2	CE, cULus, Class I Div 2	CE, cULus, Class I Div 2	CE, cULus, Class I Div 2	CE, cULus, Class I Div 2
Designer 6	Designer 6	Designer 6	Designer 6	Designer 6	Designer 6

