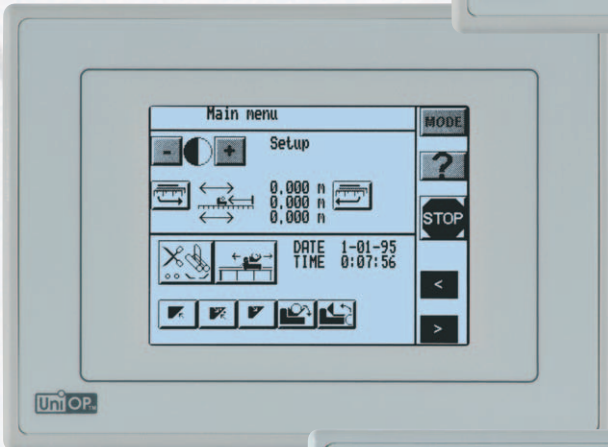
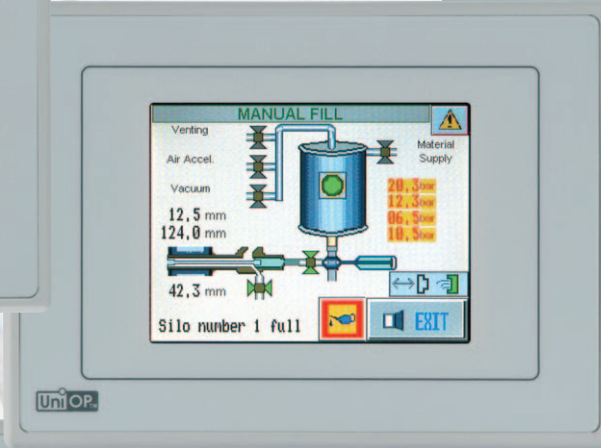


eTOP02

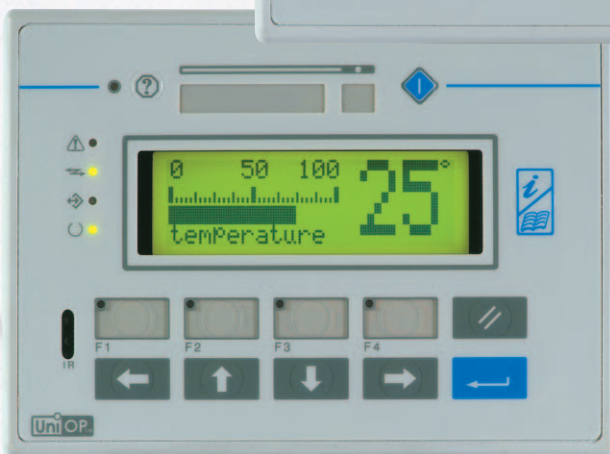
new



eTOP03



ePAD05/06



ePAD03/04

TOUCH THE TEXT

Technical Data

Communication:

200 drivers, 11 fieldbuses

Dual driver

Display:

Type

Colors

Diagonal (inch)

Lines x characters

Resolution

Definable characters

Dimming

Operator Interface:

Touchscreen

Function Keys

System keys

Numerical keys

LED indicators

Memory:

User Memory (Flash)

Flash card option

Recipe memory

Interface:

PLC Port

Programming/Printer Port

UniNet (server and client)

Aux port (optional fieldbus/Ethernet)

Ethernet programming

Serial PLC Communication

Functions:

Graphic

Video Input Option

Trend acquisition and display

Battery

Real Time Clock

Password

Alarms

Event list

Power Supply:

Voltage

Current rating (at 24 VDC)

Environment:

Degree of protection (front panel)

Temperature range (vertical installation)

Dimensions:

Front L x H mm / inches

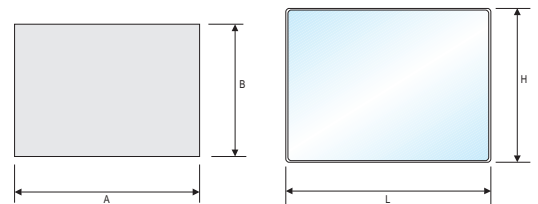
Cutout L x H mm / inches

Weight

Approvals:

Programming:

	eTOP02	eTOP03	ePAD03/ePAD04	ePAD05/ePAD06
yes	yes	yes	yes	yes
yes	yes	yes	yes* / -	yes* / -
TFT Color	LCD monochrome	LCD	LCD	LCD
256	-	-	-	-
3,5"	3.8"	-	-	-
-	-	4 x 20	4 x 20	4 x 20
320 x 240 - 1/4 VGA	320 x 240 - 1/4 VGA	120 x 32	120 x 32	120 x 32
256	256	256	256	256
yes	-	-	-	-
yes	yes	-	-	-
-	-	4	9	9
-	-	7	10	10
-	-	-	yes	yes
-	-	5	10	10
1 MB	512KB	512 KB	512KB	512KB
-	-	-	-	-
32KB	32KB	16KB / -	16KB / -	16KB / -
RS-232, RS-485	RS-232, RS-485	RS-232, RS-485	RS-232, RS-485	RS-232, RS-485
-	-	-	-	-
yes	yes	yes / client	yes / client	yes / client
yes	yes	yes	yes	yes
yes	yes	yes	yes	yes
38.400Bd	38.400Bd	38.400Bd/9.600Bd	38.400Bd/9.600Bd	38.400Bd/9.600Bd
yes	yes	yes	yes	yes
-	-	-	-	-
-	-	-	-	-
yes	yes	yes / -	yes / -	yes / -
yes	yes	yes / -	yes / -	yes / -
yes	yes	yes	yes	yes
1024	1024	1024	1024	1024
256	256	256 / -	256 / -	256 / -
18 - 30 VDC	18 - 30 VDC	18 - 30 VDC	18 - 30 VDC	18 - 30 VDC
0.4 A	0.4 A	0.25 A	0.25 A	0.25 A
IP65, NEMA 4X	IP65, NEMA 4X	IP65, NEMA 4X	IP65, NEMA 4X	IP65, NEMA 4X
0 - 50°C	0 - 50°C	0 - 50°C	0 - 50°C	0 - 50°C
149x109 / 5.86x4.29	149x109 / 5.86x4.29	149x109 / 5.86x4.29	149x109 / 5.86x4.29	149x109 / 5.86x4.29
136x96 / 5.35x3.78	136x96 / 5.35x3.78	136x96 / 5.35x3.78	136x96 / 5.35x3.78	136x96 / 5.35x3.78
1 Kg	1 Kg	1 Kg	1 Kg	1 Kg
CE, cULus	CE, cULus, Class I Div 2	CE, cULus, Class I Div 2	CE, cULus, Class I Div 2	CE, cULus, Class I Div 2
Designer 6	Designer 6	Designer 6	Designer 6	Designer 6



EXOR