

*Industrial Robot*

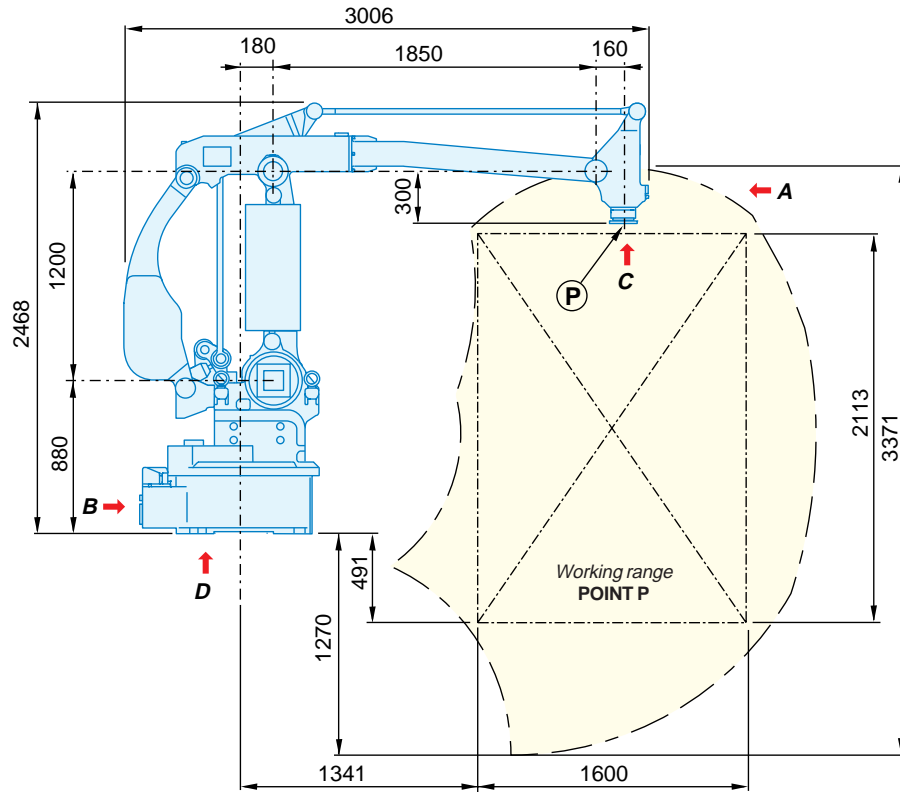
# MOTOMAN-SP100X



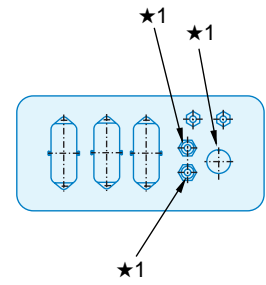
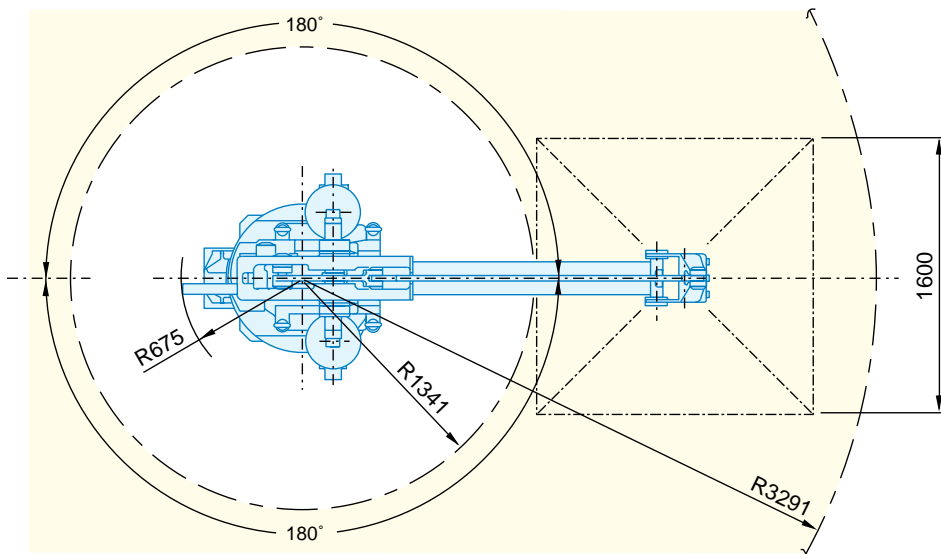
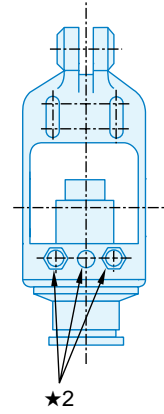
## ***Suitable applications***

- *Handling*
- *Palletising*

# MOTOMAN-SP100X

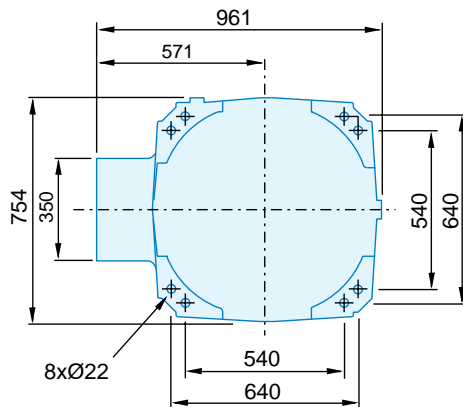


View A

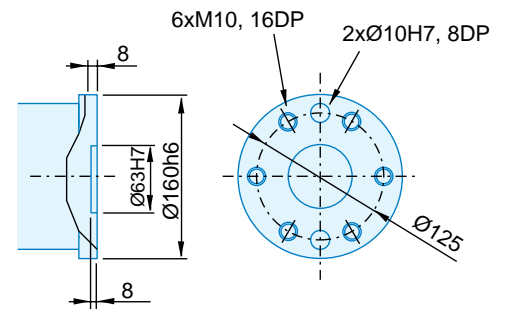


View B

★	Air duct connector	Signal connector
1	2x PT 3/8, tap	23 wires + PE
2	2x PT 3/8, tap	23 wires + PE



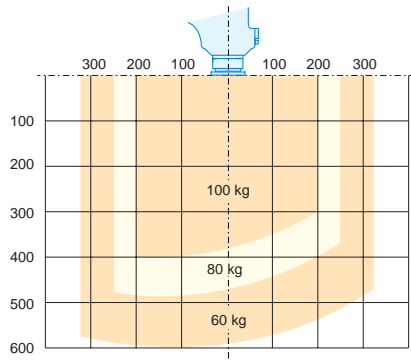
View D



View C

# Specifications SPI00X

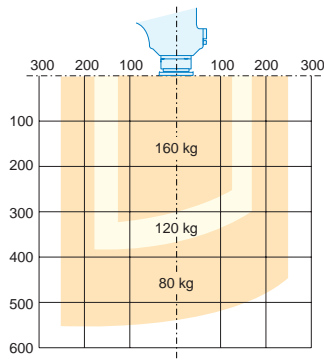
Controlled axes		4
Payload		100 kg
Repetitive positioning accuracy		±0.5 mm
Motion range	S-axis (turning)	±180°
	L-axis (lower arm)	+90°, -45°
	U-axis (upper arm)	+10°, -90°
	T-axis (wrist twist)	±350°
Maximum speed	S-axis	140°/s
	L-axis	105°/s
	U-axis	105°/s
Allowable inertia GD <sup>2</sup> /4	T-axis	40 kg·m <sup>2</sup>
	Weight	
Power supply		6.5 kVA



Ambient conditions	Temperature	0 to 45°C
	Rel. humidity	20 to 80% RH
	Vibration	0.5G or less
Others	<ul style="list-style-type: none"> <li>• IP65 (wrist unit)</li> <li>• Free from corrosive gas or liquid, or explosive gas.</li> <li>• Free from excessive electrical noise.</li> </ul>	

# Specifications SPI00X-160

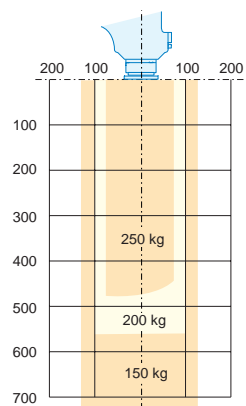
Controlled axes		4
Payload		160 kg
Repetitive positioning accuracy		±0.5 mm
Motion range	S-axis (turning)	±180°
	L-axis (lower arm)	+90°, -45°
	U-axis (upper arm)	+10°, -90°
	T-axis (wrist twist)	±350°
Maximum speed	S-axis	85°/s
	L-axis	95°/s
	U-axis	95°/s
Allowable inertia GD <sup>2</sup> /4	T-axis	40 kg·m <sup>2</sup>
	Weight	
Power supply		6.5 kVA



Ambient conditions	Temperature	0 to 45°C
	Rel. humidity	20 to 80% RH
	Vibration	0.5G or less
Others	<ul style="list-style-type: none"> <li>• IP65 (wrist unit)</li> <li>• Free from corrosive gas or liquid, or explosive gas.</li> <li>• Free from excessive electrical noise.</li> </ul>	

# Specifications SPI00X-250

Controlled axes		4
Payload		250 kg
Repetitive positioning accuracy		±0.5 mm
Motion range	S-axis (turning)	±180°
	L-axis (lower arm)	+90°, -45°
	U-axis (upper arm)	+10°, -90°
	T-axis (wrist twist)	±350°
Maximum speed	S-axis	75°/s
	L-axis	60°/s
	U-axis	60°/s
Allowable inertia GD <sup>2</sup> /4	T-axis	40 kg·m <sup>2</sup>
	Weight	
Power supply		6.5 kVA



Ambient conditions	Temperature	0 to 45°C
	Rel. humidity	20 to 80% RH
	Vibration	0.5G or less
Others	<ul style="list-style-type: none"> <li>• IP65 (wrist unit)</li> <li>• Free from corrosive gas or liquid, or explosive gas.</li> <li>• Free from excessive electrical noise.</li> </ul>	



## MOTOMAN ROBOTICS EUROPE AB

a YASKAWA company

Box 504 • SE-385 25 Torsås • Sweden  
 Tel: +46-486-48800 • Fax: +46-486-41410  
 www.motoman.se

**Group Companies:** **France:** MOTOMAN Robotics, Nantes +33-2-40131919, **Germany:** MOTOMAN Robotec, Allershausen +49-8166-90-0 • MOTOMAN Robotec, Frankfurt +49-6173-6077-30, **Great Britain:** MOTOMAN Robotics, Banbury +44-1295-272755, **Italy:** MOTOMAN Robotics, Modena +39-059-280496, **Netherlands:** MOTOMAN Benelux, Breda +31-76-5424278, **Slovenia:** RISTRO, Ribnica +386-61-861113, **Spain:** MOTOMAN Robotics, Barcelona +34-93-6303478, **Sweden:** MOTOMAN Robotics Europe, Torsås +46-486-48800 • MOTOMAN Mecatron Robotic Systems, Kalmar +46-480-444600

**Distributors:** **Czech Republic:** MGM Spol, Tabor +420-361-254571, **Denmark:** HN-Automatic Robia, Vejle +45-79428000, **Finland:** Robia Suomi, Turku +358-22145600, **Greece:** Kouvalias Industrial Robots, Kallithea +30-1-95892436, **Norway:** Robia, Drammen +47-32217830, **Portugal:** Electro-Arco, Amadora +351-14968160, **Switzerland:** Geiger Handling, Schwarzenburg +41-31-7343111 • Messer SAG, Dällikon +41-18471717