

# LINEAR IRON CORE MOTORS

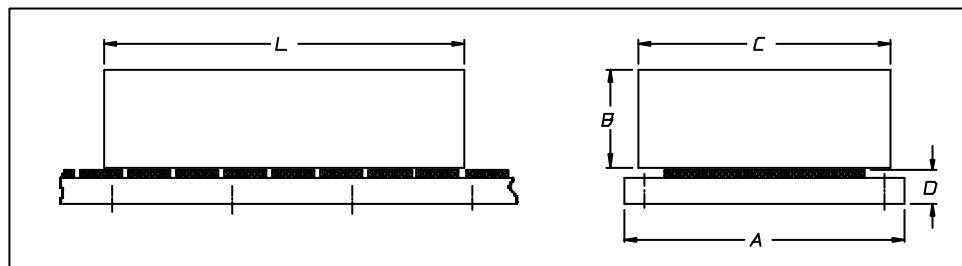


SERIES

# SKA 30HM 150

**FORCE**  
**150 N**

SINEWAVE FORM			TYPE OF WINDING							
			12	14	15	16	17	18		
MOTOR SPEED	Vn drive 3phase 145 V (ac)	[ m/s ]	4.5	3	2	1.5	1.1			
	Vn drive 3phase 220 V (ac)	[ m/s ]		4.5	3	2	1.5	1		
	Vn drive 3phase 380 V (ac)	[ m/s ]			5	4	3	2		
<b>WINDING DATA</b>										
	Poles number	P	21							
	Continuous force	Fn0 [ N ]	150							
	Voltage constant ± 5%	Ke [V/m/s]	33.9	50.9	77.8	102.5	136.8	205		
	Force constant ± 5%	Kf [N/Amp]	33.9	50.9	77.8	102.5	136.8	205		
	Rated current	In0 [A]	4.4	2.9	1.9	1.5	1.1	0.7		
	Peak force	Fmax [ N ]	300							
	Peak current	I fmax [A]	8.8	5.8	3.8	3	2.2	1.4	8.8	
	Phase/phase res. ± 10% a 25°C	[Ohm]	24.1	35.75	56.83	71	94.7	142	24.1	
	Phase/phase inductance	[mH]	120	179	284	355	474	710	120	
	Electrical time constant	[msec]	5							
	Temperature range	[°C]	0 ÷ 40							
	Attractive force	[ N ]	1390							
<b>MECHANICAL DATA</b>			<i>Power parts</i>				<i>Complete motor</i>			
	Coil assembly length	L [mm]	272							
	Coil assembly width	C [mm]	45				SEE THE			
	Coil assembly height	B [mm]	44							
	Coil assembly mass	[Kg]	2.1				MECHANICAL			
	Magnet track width	A [mm]	60							
	Magnet track height	D [mm]	12				DRAWINGS			
	Magnet track weight	[ kg/m ]	4.6							
Type of thermal cut-off			N C : normally closed							
THERMAL PROTECTION	Rated voltage	Vn [ Vac ]	250							
	Rated current	In [ A ]	2.5							
	Operative temperature	Tn [ °C ]	140 °C ± 5%							
	Resetting temperature	Tr [ °C ]	100 °C ± 15°C							
	Operative time	[ ms ]	1							
Insulation class			F							



DATA SHEET N° 1B3101030100