

LINEAR IRON CORE MOTORS

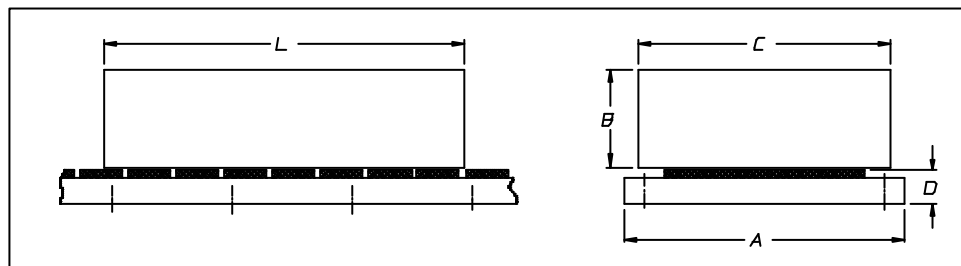


SERIES

SKA 100HS 800

FORCE
800 N

SINEWAVE FORM			SYMBOLS	UNITS	TYPE OF WINDING				
					15	16	17	18	
MOTOR SPEED	Vn drive 3phase 145 V (ac)			[m/s]	2	1.5	1.1		
	Vn drive 3phase 220 V (ac)			[m/s]	3	2	1.5	1	
	Vn drive 3phase 380 V (ac)			[m/s]	5	4	3	2	
WINDING DATA									
MOTOR RATINGS	Poles number			P			21		
	Continuous force			Fn0	[N]			800	
	Voltage constant ± 5%			Ke	[V/m/s]	77.8	102.5	136.8	205
	Force constant ± 5%			Kf	[N/Amp]	77.8	102.5	136.8	205
	Rated current			In0	[A]	10.3	7.8	5.8	4
	Peak force			Fmax	[N]			1600	
	Peak current			I fmax	[A]	20.6	15.6	11.6	8
	Phase/phase res. ± 10% a 25°C				[Ohm]	1.8	2.26	3.1	4.5
	Phase/phase inductance				[mH]	223	352	635	143
	Electrical time constant				[msec]			10	
	Temperature range				[°C]			0 ÷ 40	
	Attractive force				[N]			8900	
	MECHANICAL DATA								
					<i>Power parts</i>		<i>Complete motor</i>		
Coil assembly length			L	[mm]	524				
Coil assembly width			C	[mm]	125		SEE THE		
Coil assembly height			B	[mm]	57				
Coil assembly mass				[Kg]	13.7		MECHANICAL		
Magnet track width			A	[mm]	140				
Magnet track height			D	[mm]	16		DRAWINGS		
Magnet track weight				[kg/m]	15.7				
THERMAL PROTECTION	Type of thermal cut - off						N C : normally closed		
	Rated voltage			Vn	[Vac]			250	
	Rated current			In	[A]			2.5	
	Operative temperature			Tn	[°C]			140 °C ± 5%	
	Resetting temperature			Tr	[°C]			100 °C ± 15°C	
	Operative time				[ms]			1	
Insulation class							F		



DATA SHEET N° 1B3104020100