

LINEAR IRON CORE MOTORS

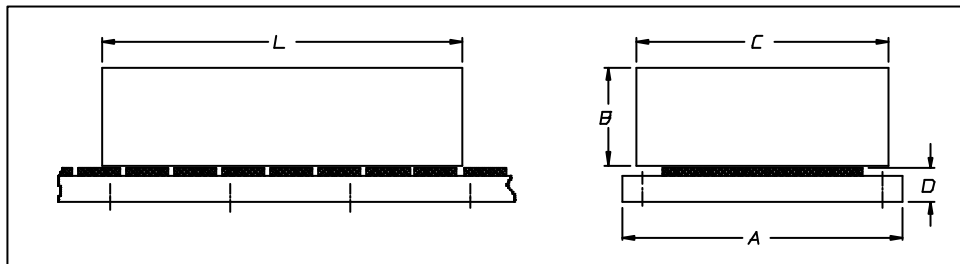


SERIES

SKA 100HM1100

FORCE
1100 N

SINEWAVE FORM			TYPE OF WINDING			
			15	16	17	18
	SYMBOLS	UNITS				
MOTOR SPEED	Vn drive 3phase 145 V (ac)	[m/s]	2	1.5	1.1	
	Vn drive 3phase 220 V (ac)	[m/s]	3	2.3	1.5	1
	Vn drive 3phase 380 V (ac)	[m/s]	5	4	3	2
WINDING DATA						
	Poles number	P	28			
	Continuous force	Fn0 [N]	1100			
	Voltage constant ± 5%	Ke [V/m/s]	77.8	102.5	136.8	205
	Force constant ± 5%	Kf [N/Amp]	77.8	102.5	136.8	205
	Rated current	In0 [A]	14	11	8	5.4
	Peak force	Fmax [N]	2200			
	Peak current	I fmax [A]	28	22	16	10.8
	Phase/phase res. ± 10% a 25°C	[Ohm]	2.6	3.26	4.35	6.5
	Phase/phase inductance	[mH]	31.2	39.1	52.2	78
	Electrical time constant	[msec]	12			
	Temperature range	[°C]	0 ÷ 40			
	Attractive force	[N]	11760			
MECHANICAL DATA			<i>Power parts</i>		<i>Complete motor</i>	
	Coil assembly length	L [mm]	692			
	Coil assembly width	C [mm]	125		SEE THE	
	Coil assembly height	B [mm]	57			
	Coil assembly mass	[Kg]	18.2		MECHANICAL	
	Magnet track width	A [mm]	140			
	Magnet track height	D [mm]	16		DRAWINGS	
	Magnet track weight	[kg/m]	15.7			
Type of thermal cut - off			N C : normally closed			
THERMAL PROTECTION	Rated voltage	Vn [Vac]	250			
	Rated current	In [A]	2.5			
	Operative temperature	Tn [°C]	140 °C ± 5%			
	Resetting temperature	Tr [°C]	100 °C ± 15°C			
	Operative time	[ms]	1			
	Insulation class		F			



DATA SHEET N° 1B3104030100