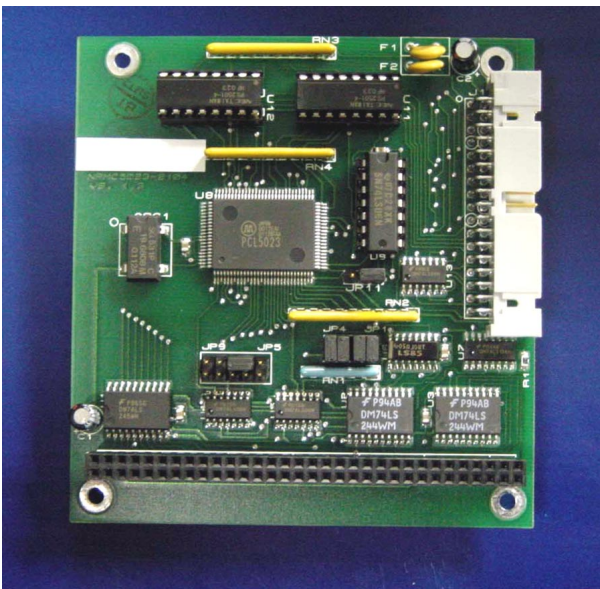


Nippon Pulse Motor

Low Cost/High Performance PC/104 Stepper Motor Controller

NPMC5023-2104



Nippon Pulse Motor Co., Ltd. (NPM) offers a two-axis stepper motor controller that utilizes PC/104 Bus.

Some of the key features of the NPMC5023-2104 are its PC/104 bus, the 2-axis control, a high pulse rate capability (4.9M pps) for microstepping, S-curve ramp up and ramp down, encoder feedback inputs, and linear interpolation. And at the ten-piece price of \$230 US (per board), the NPMC5023-2104 is very inexpensive. Evaluation software, which utilizes Microsoft Windows® 98 to provide quick setup and testing, is included; just

input speed, acceleration time, and the total step number. You will be able to test any motion profile you want.

Nippon Pulse Motor Co., Ltd., offers various controllers, drivers, motors, and communication chips to cover almost any stepper application. Please visit our website at www.pulsemotor-usa.com for information about all the products we offer.

NPM

Main US Office

Radford, VA 24141
Phone: (540) 633-1677
Fax: (540) 633-1674
E-mail: info@pulsemotor-usa.com

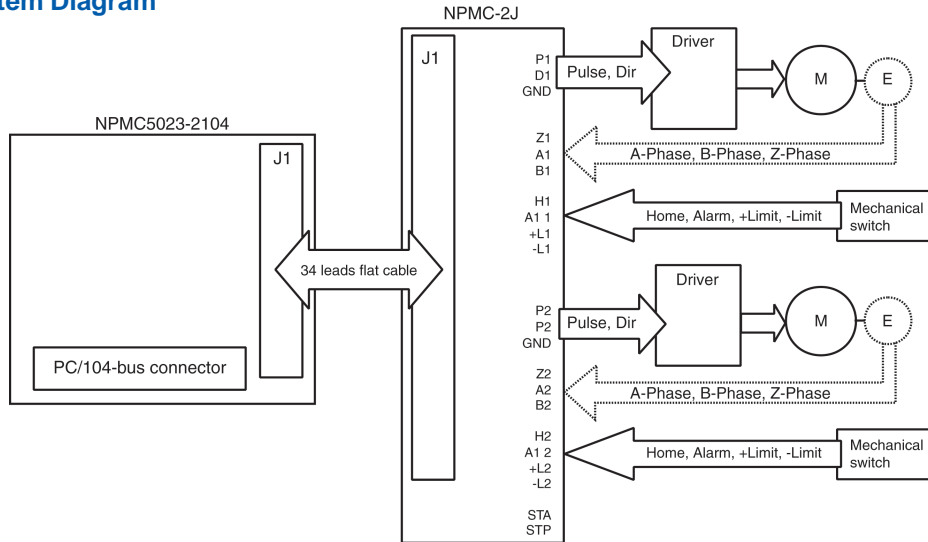
Tokyo Office

No.16-13, 2-chome, Hongo Bunkyo-ku, Tokyo 113-0033 Japan
Phone: 81-3-3813-8841
Fax: 81-3-3813-2940
E-mail: int-l@npm.co.jp

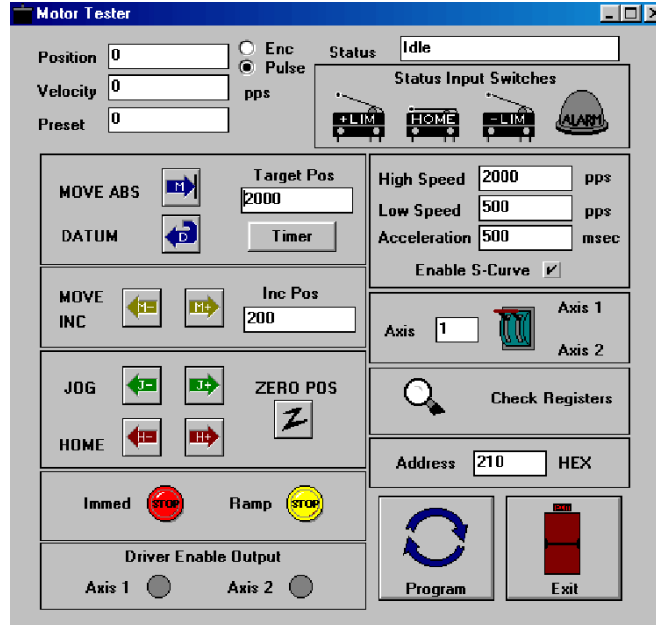
Parameter

Description	2 axis stepper pulse/direction control on PC/104-bus
Construction	One chip PCL-5023 with a reference clock of 19.6608MHz
Linear Interpolation	Yes
Max. Output Frequency	4.9 Mpps
Acceleration Types	Linear and S-Curve
Opto-Isolated Inputs	±Limits, Home, and Alarm
Driver Enable Output	Yes

System Diagram



Evaluation Software for Windows® 98



NPMC-2J Junction Board (Optional)

