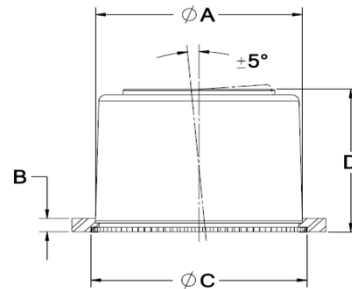


SELF-CLINCHING, SELF-ALIGNING DELRIN BEARINGS



Spyraflo's patented self-clinching, self-aligning bearings have helped OEM engineers the world over solve some tough challenges. The proprietary self-clinching bearing technology makes secure mounting in panels sometimes as thin as 0.04" fast and easy. The $\pm 5^\circ$ self-aligning bearing feature reduces machining time and simplifies the OEM assembly process as well as increasing bearing durability and life.

Delrin® acetyl bearings are an economic solution for light load / low speed rotary and linear applications.

- Flange-Mount option.
- Stainless steel option available.
- The steel retainer absorbs the installation forces with zero effect on the bearing ID.
- Maintenance free.
- Suitable for rotational, linear and oscillatory motion.
- Installation is equally successful on thin sheet steel or thick panels.
- Also available in Delrin®-AF for higher speed applications.

Refer to the Installation section on www.spyraflo.com for installation instructions.

Part Number	Part Number	ID Actual Min. Max.	Max. Load Steel - lbf/N	Max. Load S.Steel - lbf/N	Max. Speed r.p.m.	Mounting Hole A	Min. Panel Thickness B	Min. CL to Edge	C	D	Weight oz/g
FSD-093	FSSD-093	.0940 - .0970	16	16	4,041	0.234	0.04	0.19	0.28	0.19	0.01
FSD-125	FSSD-125	0.1260 - 0.1280	27	27	3,006	0.297	0.04	0.22	0.34	0.23	0.02
FSD-187	FSSD-187	0.1885 - 0.1905	47	47	2,010	0.375	0.04	0.25	0.42	0.28	0.03
FSD-187-3	FSSD-187-3	0.1885 - 0.1905	68	68	2,010	0.500"	0.04	0.38	0.55	0.40	0.06
FSD-250	FSSD-250	0.2510 - 0.2530	63	63	1,503	0.375	0.04	0.25	0.42	0.28	0.03
FSD-250-3	FSSD-250-3	0.2510 - 0.2530	91	91	1,503	0.500"	0.04	0.38	0.55	0.40	0.05
FSD-312	FSSD-312	0.3135 - 0.3155	114	114	1,205	0.547	0.06	0.41	0.60	0.39	0.10
FSD-375	FSSD-375	0.3760 - 0.3780	155	155	1,002	0.625	0.06	0.45	0.67	0.45	0.16
FSD-500	FSSD-500	0.5010 - 0.5040	308	308	752	0.812	0.06	0.50	0.87	0.65	0.31
FSD-625	FSSD-625	0.6260 - 0.6280	436	436	601	1.063	0.075	0.75	1.11	0.77	0.81
FSD-750	FSSD-750	0.7510 - 0.7530	625	625	501	1.250	0.09	0.75	1.30	0.89	1.10
FSD-1000	FSSD-1000	1.001 - 1.003	698	698	376	1.583	0.10	1.125	1.63	0.90	2.00
FSD-2M	FSSD-2M	2.060 - 2.100	61	61	4,773	5.90	1.0	4.7	7.2	4.9	2.0
FSD-4M	FSSD-4M	4.020 - 4.070	149	149	2,386	7.50	1.0	5.5	8.7	6.0	0.6
FSD-6M	FSSD-6M	6.020 - 6.070	264	264	1,591	9.50	1.0	6.4	10.6	6.9	1.0
FSD-6M-3	FSSD-6M-3	6.020 - 6.070	383	383	1,591	12.70	1.0	9.5	14.0	10.2	2.0
FSD-8M	FSSD-8M	8.030 - 8.080	511	511	1,193	13.90	1.5	10.3	15.3	10.0	3.0
FSD-10M	FSSD-10M	10.030 - 10.080	725	725	955	15.90	1.5	11.5	17.0	11.4	4.0
FSD-12M	FSSD-12M	12.030 - 12.080	1,295	1,295	795	20.60	1.5	12.7	22.0	16.5	9.0
FSD-15M	FSSD-15M	15.030 - 15.080	1,831	1,831	636	27.00	2.0	19.0	28.0	19.4	7.0
FSD-16M	FSSD-16M	16.030 - 16.080	1,953	1,953	597	27.00	2.0	19.0	28.0	19.4	7.0
FSD-18M	FSSD-18M	18.030 - 18.080	2,627	2,627	530	31.80	2.3	19.0	33.0	22.4	32
FSD-20M	FSSD-20M	20.030 - 20.050	2,919	2,919	477	31.80	2.3	19.0	33.0	22.4	32
FSD-25M	FSSD-25M	25.030 - 25.080	3,057	3,057	382	40.21	2.5	28.5	41.4	22.9	59

For more information about Spyraflo bearings visit www.spyraflo.com.

PO Box 2309 Peachtree City, GA 30269 Phone 800-487-7601 sales@spyraflo.com