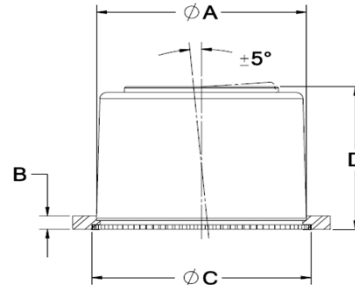


## SELF-CLINCHING, SELF-ALIGNING NEEDLE-ROLLER BEARINGS



Spyraflo's patented self-clinching, self-aligning bearings have helped OEM engineers the world over solve some tough challenges. The proprietary self-clinching bearing technology makes secure mounting in panels sometimes as thin as 0.04" fast and easy. The  $\pm 5^\circ$  self-aligning bearing feature reduces machining time and simplifies the OEM assembly process as well as increasing bearing durability and life.

Needle-Roller Bearings are an economic solution for medium load / high speed applications.

- Pre-Lubricated.
- Suitable for rotational motion.
- Requires a hardened shaft.
- Flange-Mount option.
- The steel retainer absorbs the installation forces with zero effect on the bearing ID.
- Installation is equally successful on thin sheet steel or thick panels.

Refer to the Installation section on [www.spyraflo.com](http://www.spyraflo.com) for installation instructions.

Part Number	Shaft Dia. Min. Max.	Max. Load lbf/N	Max. Speed r.p.m.	Mounting Hole A	Min. Panel Thickness B	Min. CL to Edge	C	D	Weight oz/g
FSN-125	0.1247 - 0.1250	360	31,500	0.500	0.04	0.380	0.55	0.40	0.21
FSN-187	0.1872 - 0.1875	430	21,000	0.625	0.06	0.450	0.67	0.46	0.40
FSN-250	0.2495 - 0.2500	430	44,000	0.625	0.06	0.450	0.67	0.46	0.90
FSN-312	0.3120 - 0.3125	600	35,500	0.812	0.06	0.500	0.87	0.64	0.80
FSN-375	0.3745 - 0.3750	600	29,500	0.812	0.06	0.500	0.87	0.64	0.70
FSN-500	0.4995 - 0.5000	950	22,000	1.063	0.075	0.750	1.10	0.77	1.40
FSN-625	0.6245 - 0.6250	1,830	17,600	1.250	0.09	0.750	1.30	0.89	2.30
FSN-750	0.7495 - 0.7500	1,330	14,700	1.583	0.09	1.125	1.63	0.90	3.20
FSN-4M	3.992 - 4.000	1,780	41,000	15.90	1.5	11.5	17.0	11.6	11
FSN-6M	5.992 - 6.000	1,830	35,000	15.90	1.5	11.5	17.0	11.6	10
FSN-8M	7.991 - 8.000	1,830	28,000	20.60	1.5	12.7	22.0	16.3	23
FSN-10M	9.991 - 10.000	2,550	23,000	20.60	1.5	12.7	22.0	16.3	20
FSN-12M	11.989 - 12.000	2,550	20,000	27.00	2.0	19.0	28.0	19.5	40
FSN-15M	14.989 - 15.000	7,800	16,000	31.80	2.3	19.0	33.0	22.5	71
FSN-16M	15.989 - 16.000	7,800	16,000	31.80	2.3	19.0	33.0	22.5	71

For more information about Spyraflo bearings visit [www.spyraflo.com](http://www.spyraflo.com).