

SG-P11-070-010-12-HH-782X-00000

PLANETARY GEARBOXES

SG 070

$i=010$

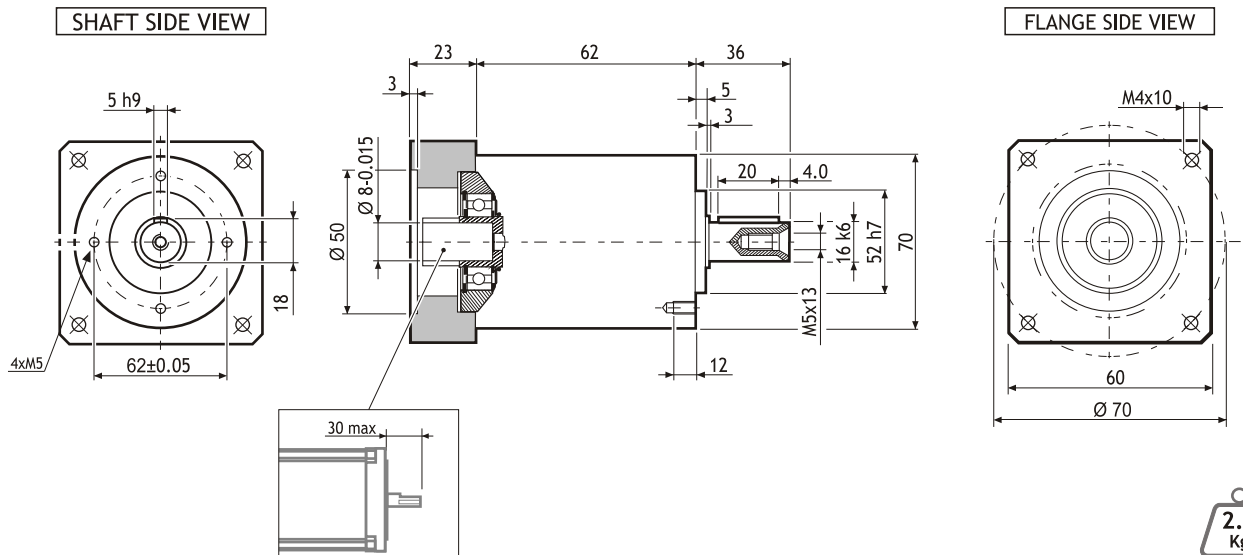
$\varphi=12'$

MADE IN ITALY

IP64

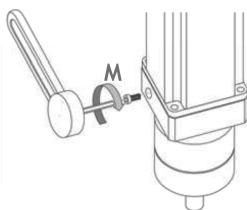


Dimensions (Units:mm)



| MODEL | Rated output torque [Nm] | Maximum acceleration output torque [Nm] | Emergency step output torque [Nm] | Backlash [arcmin] | Nominal input speed [min ⁻¹] | Maximum momentary input speed [min ⁻¹] | Torsional stiffness [Nm/arcmin] | Maximum radial force applying on output shaft [N] | Maximum axial force applying on output shaft [N] | Gear efficiency [%] | Gear moment of inertia [Kg ^m ²] |
|---------------------------------|--------------------------|---|-----------------------------------|-------------------|--|--|---------------------------------|---|--|---------------------|--|
| SG-P11-070-010-12-HH-782X-00000 | 18 | 30 | 60 | 12' | 4000 | 6000 | 3 | 1300 | 1400 | 97 | 0.06x10 ⁻⁴ |

Suggested motors



103-H7823 SERIES



MOUNTING OPERATION MODE: ■ Tightening torque M=5 Nm ■ Locking bolt M4 ■ R.T.A. Quality Control