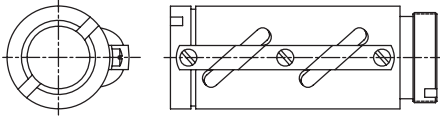


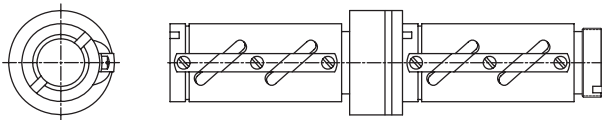
Precision Rolled Ball Screws Product Overview — Inch Series

Standard Non-Preloaded Ball Nuts



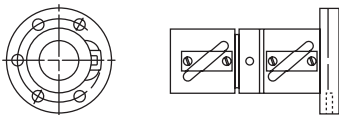
Standard Non-Preloaded Ball Nuts are a flexible, economical solution for use in industrial, transport grade applications. Both round and square models are available, with flange and wiper kits as accessories. Non-Preloaded Ball Nuts come standard with black-oxide coating (thin dense chrome is available upon request).

Preloaded Ball Nuts



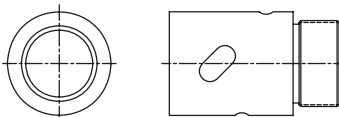
Preloaded Ball Nuts should be considered to eliminate backlash and increase system stiffness in applications where multi-directional positional accuracy and repeatability are required. Preloaded Ball Nuts consist of two non-preloaded ball nuts (round or square) joined by an adjustable preload package with springs. This design allows ease of setup and adjust of preload based on application requirements.

Preloaded Ball Nuts with Integral Flange



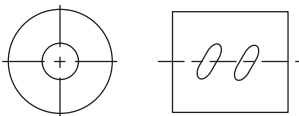
Preloaded Ball Nuts with Integral Flange provide higher-level positional accuracy and repeatability from a rolled screw assembly. These adjustable preload ball nuts feature precision ground internal threads, which enable smoother running, more consistent performance. The integral flange is held to high perpendicularity tolerances to ensure the load bearings are aligned to load to prevent unnecessary wear.

Internal Return Ball Nuts



Internal Return Ball Nuts feature an internal ball recirculation system, which allows higher speeds, and lower noise in a compact envelope. Each nut includes an integrated wiper as standard. These ball nuts come standard "as machined" with corrosion protective film applied prior to shipment. Please note, a full line of internal return ball nuts are featured as part of our metric series ball screws.

Cylindrical Ball Nuts



Cylindrical Ball Nuts are compact in size and ideal for constrained envelopes. These ball nuts come standard "as machined" with corrosion protective film applied prior to shipment. Please note, a full line of cylindrical ball nuts are featured as part of our metric series ball screws.

High Capacity Ball Nuts

High Capacity Ball Nuts provide higher static and dynamic load capacities than our standard nuts. These ball nuts are typically longer than standard nuts, allowing for more balls in contact with the screw. High capacity nuts may also include larger balls than those found in standard ball nuts.

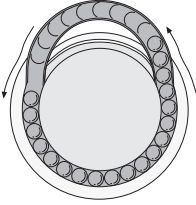
High Speed Ball Nuts

High Speed Ball Nuts are designed to permit higher linear speeds in applications where critical speed of the ball nut (DN value) limits performance in an application. These ball nuts feature solid deflectors and reinforced ball return guides to allow smooth, reliable transition of balls entering and exiting the return system at high speeds.

Precision Rolled Ball Screws Product Overview — Inch Series

Tangential Ball Return

A unique Thomson feature which minimizes recirculated bearing ball deflection, for smoother and quieter operation. The tangential circuit consists of a pick-up deflector finger and modified return tube which allows the bearing balls to enter and exit the load carrying portion of the ball screw circuit in a straight path. Standard on ball bearing screws with up to 10,000 pound dynamic load capabilities.



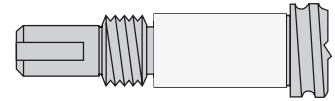
Load Locking Spring

The load locking spring is a coil turned into the inactive portion of the nut and conforms to the ball tract. In normal operation, the spring is inactive and not in contact with the screw. In the event the ball bearings are lost from the nut, the load locking spring will not allow the load carrying nut to free-fall down the screw.

End Journals and Bearing Supports

To assist the designer, standard end journals and bearing supports are included in this catalog. Ball screw assemblies, complete with end journals and bearing supports, may be ordered through a local Thomson distributor or directly from the factory.

Thomson welcomes the opportunity to custom machine end journals to unique customer designs.



Lube Holes

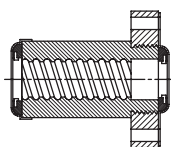
A standard 1/8-27 NPT tapped hole on ball nuts with a dynamic load capacity of 10,000 pounds or more provides easy access for continuing lubrication.

Coating

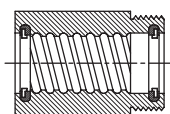
Our catalog standard ball screws feature a high luster polished and oiled finish, which provides superior surface finish, smoother operation, and a high quality look and feel which is consistent across our entire product line. Additional ball screw coatings (thin dense chrome, black oxide, manganese phosphate) are available upon request.

Wiper Kit

Wipers can increase the life and long-term performance of ball bearing screws by preventing most dirt and other foreign matter from entering the ball nut. Wipers are attached via two methods: Type A attaches directly to the ball nut body and flange; and Type B installs into the ends of the ball nut with easy-to-install snap rings kits. See our installation section on page 195 for more details.



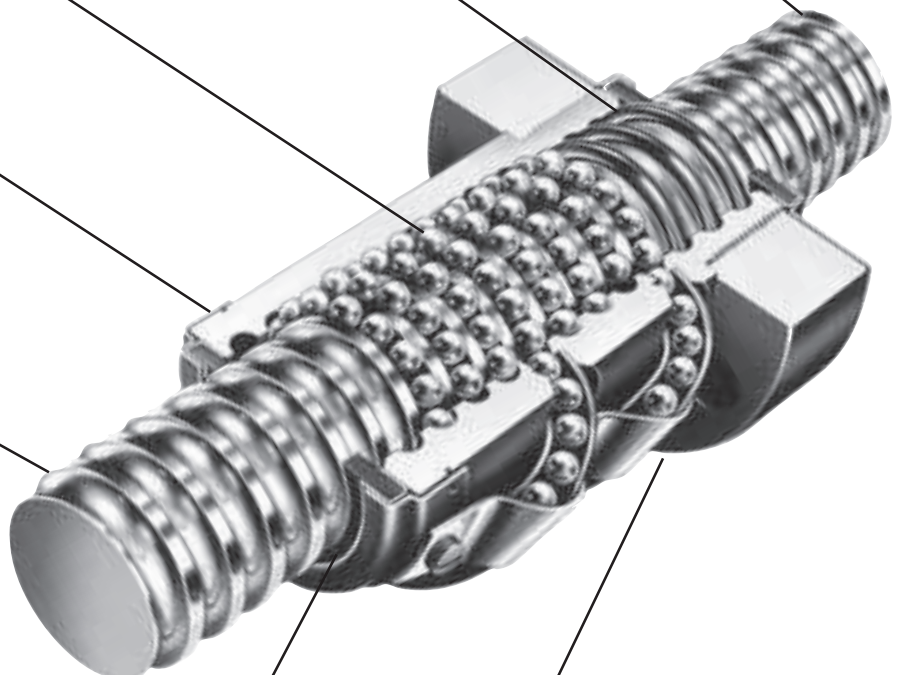
Type A



Type B

Flanges

Standard flanges are offered for all ball nuts. Flanges provide an easy, low cost method to mount the load square and concentric to the ball screw.

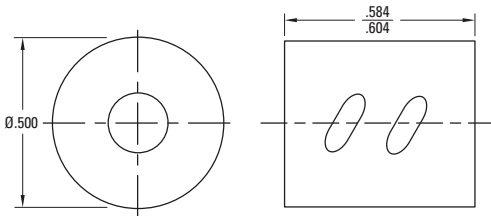


0.187 x 0.050

Precision Rolled Ball Screws — Inch Series

Diameter x Lead (in.)	0.187 x 0.050
Lead Accuracy (in/ft)	± 0.004
Screw Weight (lbs/ft)	0.1
Screw Root Diameter (in.)	0.14
Nominal Ball Diameter (in.)	0.039
Number of Starts	1

Double Circuit, Cylindrical Ball Nut, Internal Return — Stainless Steel



Ball Screw Part Numbers

Thread Direction	Right Hand	Left Hand	Right Hand
Screw Material	Carbon Steel	Carbon Steel	Stainless Steel
Standard Length			12"
Maximum Length			12"
Part Number			7821634

Ball screws can be cut to the length you require. Specify ball screw part number and overall length at time of order.

Thread Direction	Right Hand	Left Hand	Right Hand
Nut Material	Carbon Steel	Carbon Steel	Stainless Steel
Dynamic Load (lbs)			20
Max. Static Load (lbs)			75
Torque to raise 1 lb (oz-in.)			0.14
Nut weight (lbs)			0.005
Ball Nut Part Number			7821609
Flange Part Number			N/A
Wiper Kit Part Number			N/A

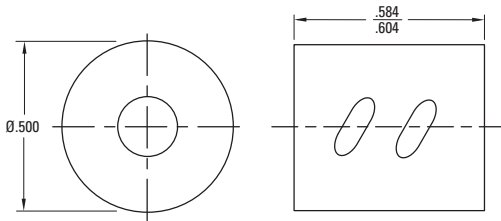
Note: Dimensional information for all End Journals and Bearing Supports is available on page 142. Information on required lubrication is on page 172.

0.187 x 0.062

Precision Rolled Ball Screws — Inch Series

Diameter x Lead (in.)	0.187 x 0.062
Lead Accuracy (in/ft)	± 0.004
Screw Weight (lbs/ft)	0.1
Screw Root Diameter (in.)	0.14
Nominal Ball Diameter (in.)	0.039
Number of Starts	1

Double Circuit, Cylindrical Ball Nut, Internal Return — Stainless Steel



Ball Screw Part Numbers

Thread Direction	Right Hand	Left Hand	Right Hand
Screw Material	Carbon Steel	Carbon Steel	Stainless Steel
Standard Length			12"
Maximum Length			12"
Part Number			7821633

Ball screws can be cut to the length you require. Specify ball screw part number and overall length at time of order.

Thread Direction	Right Hand	Left Hand	Right Hand
Nut Material	Carbon Steel	Carbon Steel	Stainless Steel
Dynamic Load (lbs)			20
Max. Static Load (lbs)			75
Torque to raise 1 lb (oz-in.)			0.18
Nut weight (lbs)			0.005
Ball Nut Part Number			7821579
Flange Part Number			N/A
Wiper Kit Part Number			N/A

Note: Dimensional information for all End Journals and Bearing Supports is available on page 142. Information on required lubrication is on page 172.

0.375 x 0.125

Precision Rolled Ball Screws — Inch Series

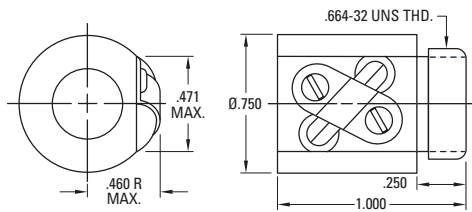
Diameter x Lead (in.)	0.375 x 0.125
Lead Accuracy (in/ft)	± 0.004
Screw Weight (lbs/ft)	0.3
Screw Root Diameter (in.)	0.30
Nominal Ball Diameter (in.)	0.063
Number of Starts	1

Ball Screw Part Numbers

Thread Direction	Right Hand	Left Hand	Right Hand
Screw Material	Carbon Steel	Carbon Steel	Stainless Steel
Standard Length	48"	48"	48"
Maximum Length	48"	48"	48"
Part Number	5707538	5708532	5706540

Ball screws can be cut to the length you require. Specify ball screw part number and overall length at time of order.

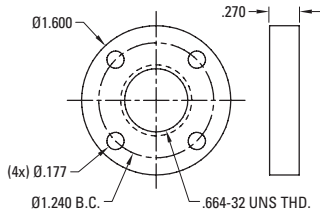
Single Circuit, Round Ball Nut



Direction	Right Hand	Left Hand	Right Hand
Nut Material	Carbon Steel	Carbon Steel	Stainless Steel
Dynamic Load (lbs)	136	136	24
Max. Static Load (lbs)	1415	1415	255
Torque to raise 1 lb (oz-in.)	0.35	0.35	0.35
Nut weight (lbs)	0.13	0.13	0.13
Ball Nut Part Number	5709574	5709576	5709578
Flange Part Number	5706751	5706751	N/A
Wiper Kit Part Number	N/A	N/A	N/A

Flange Kit

Flange



Wiper Part Number	N/A	
Flange Part Number	5706751	

Note: Dimensional information for all End Journals and Bearing Supports is available on page 142. Information on required lubrication is on page 172.

0.375 x 0.125

Precision Rolled High Capacity Ball Screws — Inch Series

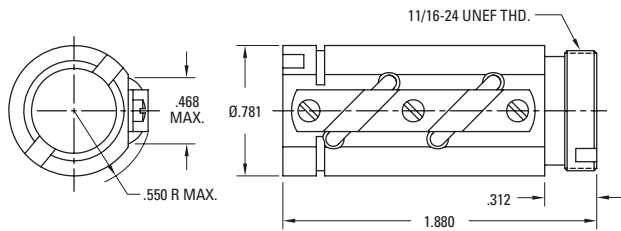
Diameter x Lead (in.)	0.375 x 0.125
Lead Accuracy (in/ft)	± 0.004
Screw Weight (lbs/ft)	0.3
Screw Root Diameter (in.)	0.31
Nominal Ball Diameter (in.)	0.078
Number of Starts	1

Ball Screw Part Numbers

Thread Direction	Right Hand	Left Hand	Right Hand
Screw Material	Carbon Steel	Carbon Steel	Stainless Steel
Standard Length	72"		
Maximum Length	72"		
Part Number	190-9441		

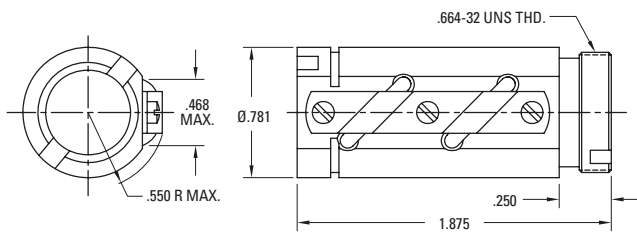
Ball screws can be cut to the length you require. Specify ball screw part number and overall length at time of order.

Double Circuit, Round Ball Nut with Load Lock (11/16 - 24 V-Thread)



Thread Direction	Right Hand	Left Hand
Nut Material	Carbon Steel	
Dynamic Load (lbs)	500	
Max. Static Load (lbs)	4,250	
Torque to raise 1 lb (oz-in.)	0.35	
Nut weight (lbs)	0.16	
Ball Nut Part Number	8103-448-003	
Flange Part Number	8103-448-002	
Wiper Kit Part Number	8103-101-002	

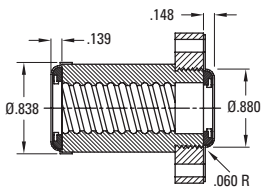
Double Circuit, Round Ball Nut with Load Lock (.664 - 32 V-Thread)



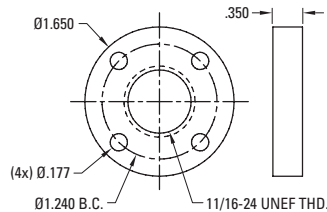
Thread Direction	Right Hand	Left Hand
Nut Material	Carbon Steel	
Dynamic Load (lbs)	500	
Max. Static Load (lbs)	4,250	
Torque to raise 1 lb (oz-in.)	0.35	
Nut weight (lbs)	0.16	
Ball Nut Part Number	8103-448-013	
Flange Part Number	N/A	
Wiper Kit Part Number	8103-101-002	

Wiper and Flange Kits

Wiper



Flange



Wiper Part Number	8103-101-002	
Flange Part Number	8103-448-002	

Note: Dimensional information for all End Journals and Bearing Supports is available on page 142. Information on required lubrication is on page 172.

0.500 x 0.200

Precision Rolled Ball Screws — Inch Series

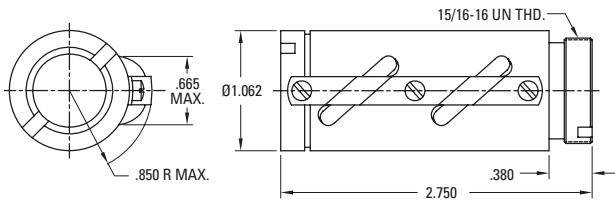
Diameter x Lead (in.)	0.500 x 0.200
Lead Accuracy (in/ft)	± 0.004
Screw Weight (lbs/ft)	0.7
Screw Root Diameter (in.)	0.41
Nominal Ball Diameter (in.)	0.125
Number of Starts	1

Ball Screw Part Numbers

Thread Direction	Right Hand	Left Hand	Right Hand
Screw Material	Carbon Steel	Carbon Steel	Stainless Steel
Standard Length	72"		
Maximum Length	72"		
Part Number	190-9097		

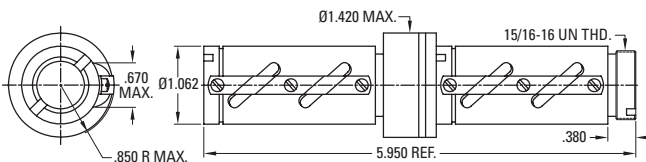
Ball screws can be cut to the length you require. Specify ball screw part number and overall length at time of order.

Double Circuit, Round Ball Nut with Load Lock



Thread Direction	Right Hand	Left Hand
Nut Material	Carbon Steel	
Dynamic Load (lbs)	1,200	
Max. Static Load (lbs)	9,430	
Torque to raise 1 lb (oz-in.)	0.57	
Nut weight (lbs)	0.55	
Ball Nut Part Number	8105-448-013	
Flange Part Number	8105-448-002	
Wiper Kit Part Number	8105-101-002	

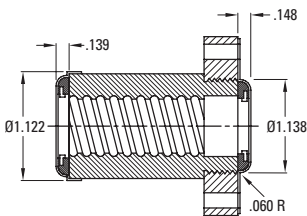
Preloaded, Double Circuit, Round Ball Nut with Load Lock



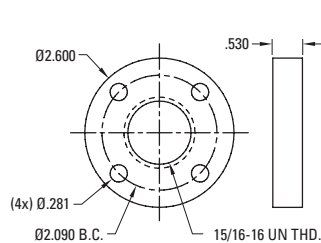
Thread Direction	Right Hand	Left Hand
Nut Material	Carbon Steel	
Dynamic Load (lbs)	1,200	
Max. Static Load (lbs)	9,430	
Torque to raise 1 lb (oz-in.)	0.57	
Nut weight (lbs)	1.30	
Ball Nut Part Number	8105-448-008	
Flange Part Number	8105-448-002	
Wiper Kit Part Number	8105-101-002	

Wiper and Flange Kits

Wiper



Flange



Wiper Part Number	8105-101-002	
Flange Part Number	8105-448-002	

Note: Dimensional information for all End Journals and Bearing Supports is available on page 142. Information on required lubrication is on page 172.

0.500 x 0.500

Precision Rolled Ball Screws — Inch Series

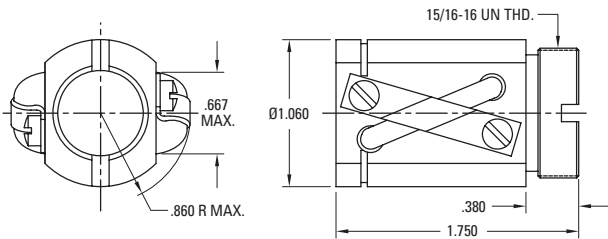
Diameter x Lead (in.)	0.500 x 0.500
Lead Accuracy (in/ft)	± 0.004
Screw Weight (lbs/ft)	0.7
Screw Root Diameter (in.)	0.41
Nominal Ball Diameter (in.)	0.125
Number of Starts	2

Ball Screw Part Numbers

Thread Direction	Right Hand	Left Hand	Right Hand
Screw Material	Carbon Steel	Carbon Steel	Stainless Steel
Standard Length	72"		72"
Maximum Length	72"		72"
Part Number	190-9096		190-9010

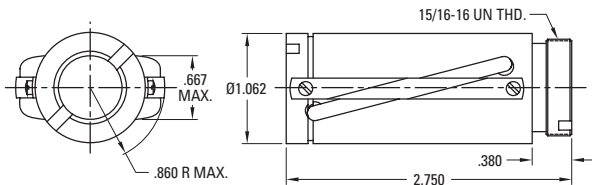
Ball screws can be cut to the length you require. Specify ball screw part number and overall length at time of order.

Double Circuit, Round Ball Nut with Load Lock



Thread Direction	Right Hand	Left Hand
Nut Material	Carbon Steel	
Dynamic Load (lbs)	929	
Max. Static Load (lbs)	4,150	
Torque to raise 1 lb (oz-in.)	1.42	
Nut weight (lbs)	0.27	
Ball Nut Part Number	8105-448-014	
Flange Part Number	8105-448-002	
Wiper Kit Part Number	8105-101-002	

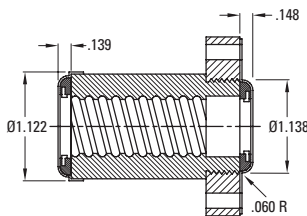
Double Circuit, Round Ball Nut with Load Lock — High Capacity



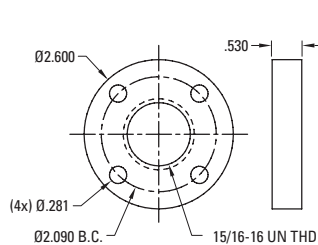
Thread Direction	Right Hand	Left Hand	Right Hand
Nut Material	Carbon Steel	Carbon Steel	Stainless Steel
Dynamic Load (lbs)	2,200		380
Max. Static Load (lbs)	13,350		1,950
Torque to raise 1 lb (oz-in.)	1.42		1.42
Nut weight (lbs)	0.40		0.40
Ball Nut Part Number	8105-448-011		8105-448-016
Flange Part Number	8105-448-002		8105-448-004
Wiper Kit Part Number	8105-101-002		8105-101-002

Wiper and Flange Kits

Wiper



Flange



Wiper Part Number	8105-101-002	8105-101-002
Flange Part Number	8105-448-002	8105-448-004

Note: Dimensional information for all End Journals and Bearing Supports is available on page 142. Information on required lubrication is on page 172.

0.631 x 0.200

Precision Rolled Ball Screws — Inch Series

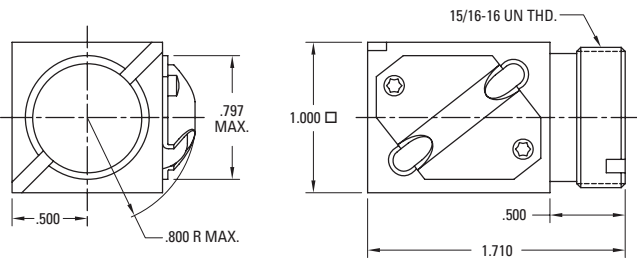
Diameter x Lead (in.)	0.631 x 0.200
Lead Accuracy (in/ft)	± 0.004
Screw Weight (lbs/ft)	0.9
Screw Root Diameter (in.)	0.50
Nominal Ball Diameter (in.)	0.125
Number of Starts	1

Ball Screw Part Numbers

Thread Direction	Right Hand	Left Hand	Right Hand
Screw Material	Carbon Steel	Carbon Steel	Stainless Steel
Standard Length	72"	72"	72"
Maximum Length	144"	144"	72"
Part Number	190-9098	190-9099	5705378

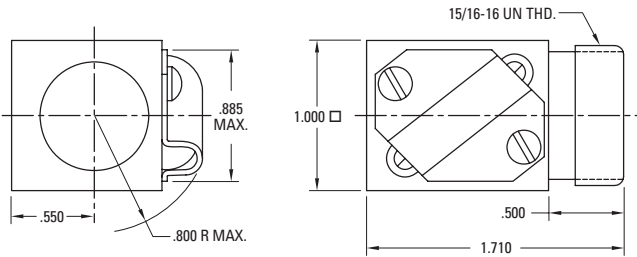
Ball screws can be cut to the length you require. Specify ball screw part number and overall length at time of order.

Single Circuit, Square Ball Nut with Load Lock



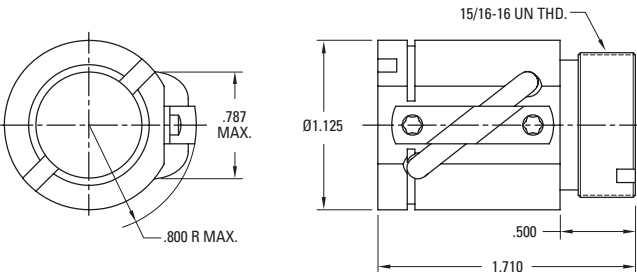
Thread Direction	Right Hand	Left Hand
Nut Material	Carbon Steel	Carbon Steel
Dynamic Load (lbs)	800	800
Max. Static Load (lbs)	6,384	6,384
Torque to raise 1 lb (oz-in.)	0.57	0.57
Nut weight (lbs)	0.27	0.27
Ball Nut Part Number	8106-448-022	8106-448-026
Flange Part Number	8105-448-002	8105-448-002
Wiper Kit Part Number	N/A	N/A

Single Circuit, Square Ball Nut – Stainless Steel



Thread Direction	Right Hand	Left Hand	Right Hand
Nut Material	Carbon Steel	Carbon Steel	Stainless Steel
Dynamic Load (lbs)			140
Max. Static Load (lbs)			1,149
Torque to raise 1 lb (oz-in.)			0.57
Nut weight (lbs)			0.27
Ball Nut Part Number			5707645
Flange Part Number			N/A
Wiper Kit Part Number			5702647

Single Circuit, Round Ball Nut with Load Lock



Thread Direction	Right Hand	Left Hand
Nut Material	Carbon Steel	Carbon Steel
Dynamic Load (lbs)	800	800
Max. Static Load (lbs)	6,384	6,384
Torque to raise 1 lb (oz-in.)	0.57	0.57
Nut weight (lbs)	0.27	0.27
Ball Nut Part Number	8106-448-009	8106-448-008
Flange Part Number	8105-448-002	8105-448-002
Wiper Kit Part Number	8106-101-002	8106-101-002

Note: Dimensional information for all End Journals and Bearing Supports is available on page 142. Information on required lubrication is on page 172.

0.631 x 0.200

Precision Rolled Ball Screws — Inch Series

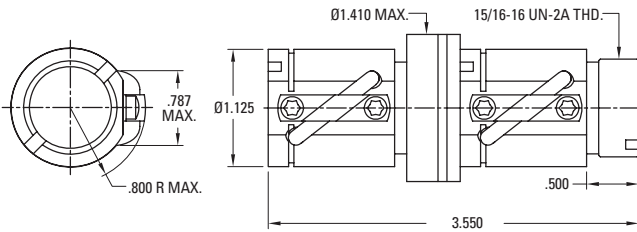
Diameter x Lead (in.)	0.631 x 0.200
Lead Accuracy (in/ft)	± 0.004
Screw Weight (lbs/ft)	0.9
Screw Root Diameter (in.)	0.50
Nominal Ball Diameter (in.)	0.125
Number of Starts	1

Ball Screw Part Numbers

Thread Direction	Right Hand	Left Hand	Right Hand
Screw Material	Carbon Steel	Carbon Steel	Stainless Steel
Standard Length	72"	72"	72"
Maximum Length	144"	144"	72"
Part Number	190-9098	190-9099	5705378

Ball screws can be cut to the length you require. Specify ball screw part number and overall length at time of order.

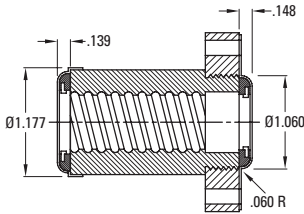
Preloaded, Single Circuit, Round Ball Nut



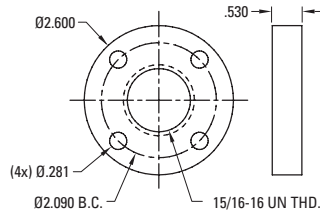
Thread Direction	Right Hand	Left Hand
Nut Material	Carbon Steel	Carbon Steel
Dynamic Load (lbs)	800	800
Max. Static Load (lbs)	6,384	6,384
Torque to raise 1 lb (oz-in.)	0.57	0.57
Nut weight (lbs)	0.79	0.79
Ball Nut Part Number	8106-448-015	8106-448-019
Flange Part Number	8105-448-002	8105-448-002
Wiper Kit Part Number	8106-101-002	8106-101-002

Wiper and Flange Kits

Wiper



Flange



Wiper Part Number	8106-101-002		5702647
Flange Part Number	8105-448-002		N/A

Note: Dimensional information for all End Journals and Bearing Supports is available on page 142. Information on required lubrication is on page 172.

0.631 x 0.200

Precision Rolled High Capacity Ball Screws — Inch Series

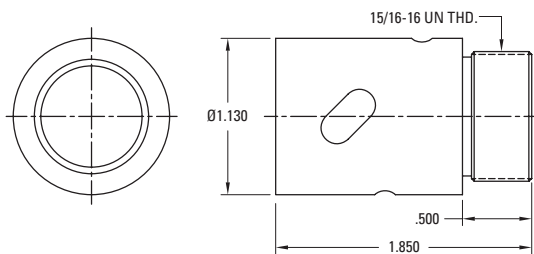
Diameter x Lead (in.)	0.631 x 0.200
Lead Accuracy (in/ft)	± 0.004
Screw Weight (lbs/ft)	0.9
Screw Root Diameter (in.)	0.50
Nominal Ball Diameter (in.)	0.138
Number of Starts	1

Ball Screw Part Numbers

Thread Direction	Right Hand	Left Hand	Right Hand
Screw Material	Carbon Steel	Carbon Steel	Stainless Steel
Standard Length	118"		
Maximum Length	118"		
Part Number	7832873-T7		

Ball screws can be cut to the length you require. Specify ball screw part number and overall length at time of order.

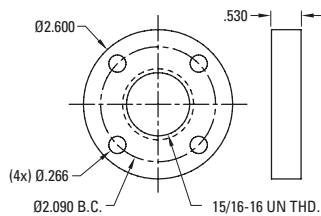
Triple Circuit, Internal Return, Round Ball Nut — High Capacity



Thread Direction	Right Hand	Left Hand
Nut Material	Carbon Steel	
Dynamic Load (lbs)	650	
Max. Static Load (lbs)	4,950	
Torque to raise 1 lb (oz-in.)	0.57	
Nut weight (lbs)	0.27	
Ball Nut Part Number	7832872	
Flange Part Number	5707570	
Wiper Kit Part Number*	Internal	

Flange Kit

Flange



Wiper Part Number	N/A	
Flange Part Number	5707570	

* Wiper Kit is included with this ball nut.

Note: Dimensional information for all End Journals and Bearing Supports is available on page 142. Information on required lubrication is on page 172.

0.631 x 1.000

Precision Rolled Ball Screws — Inch Series

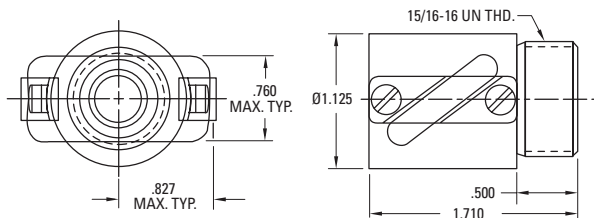
Diameter x Lead (in.)	0.631 x 1.000
Lead Accuracy (in/ft)	± 0.004
Screw Weight (lbs/ft)	0.8
Screw Root Diameter (in.)	0.48
Nominal Ball Diameter (in.)	0.125
Number of Starts	2

Ball Screw Part Numbers

Thread Direction	Right Hand	Left Hand	Right Hand
Screw Material	Carbon Steel	Carbon Steel	Stainless Steel
Standard Length	72"		
Maximum Length	96"		
Part Number	7826712		

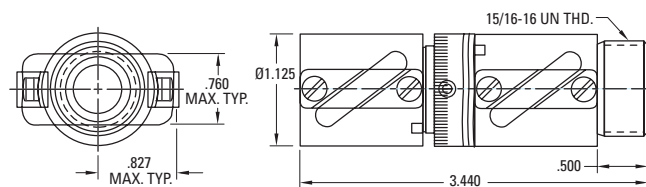
Ball screws can be cut to the length you require. Specify ball screw part number and overall length at time of order.

Double Circuit, Round Ball Nut



Thread Direction	Right Hand	Left Hand
Nut Material	Carbon Steel	
Dynamic Load (lbs)	578	
Max. Static Load (lbs)	2,425	
Torque to raise 1 lb (oz-in.)	2.83	
Nut weight (lbs)	0.28	
Ball Nut Part Number	7826713	
Flange Part Number	5707570	
Wiper Kit Part Number	7827527	

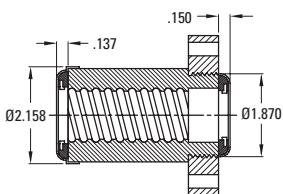
Preloaded, Double Circuit, Round Ball Nut



Thread Direction	Right Hand	Left Hand
Nut Material	Carbon Steel	
Dynamic Load (lbs)	578	
Max. Static Load (lbs)	2,425	
Torque to raise 1 lb (oz-in.)	2.83	
Nut weight (lbs)	0.67	
Ball Nut Part Number	7827531	
Flange Part Number	5707570	
Wiper Kit Part Number	7827527	

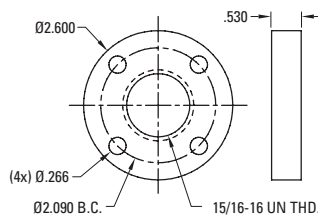
Wiper and Flange Kits

Wiper



Note: Wiper kit does not include flange end cap.

Flange



Wiper Part Number	7827527	
Flange Part Number	5707570	

Note: Dimensional information for all End Journals and Bearing Supports is available on page 142. Information on required lubrication is on page 172.

0.750 x 0.200

Precision Rolled Ball Screws — Inch Series

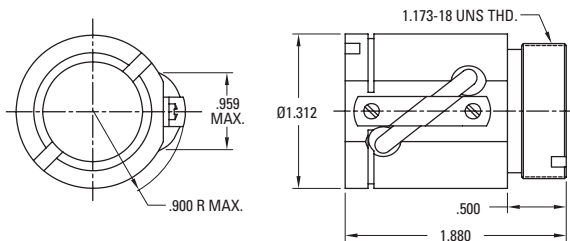
Diameter x Lead (in.)	0.750 x 0.200
Lead Accuracy (in/ft)	± 0.004
Screw Weight (lbs/ft)	1.4
Screw Root Diameter (in.)	0.66
Nominal Ball Diameter (in.)	0.125
Number of Starts	1

Ball Screw Part Numbers

Thread Direction	Right Hand	Left Hand	Right Hand
Screw Material	Carbon Steel	Carbon Steel	Stainless Steel
Standard Length	72"		
Maximum Length	144"		
Part Number	190-9101		

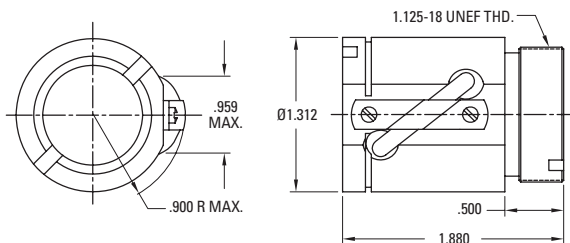
Ball screws can be cut to the length you require. Specify ball screw part number and overall length at time of order.

Single Circuit, Round Ball Nut with Load Lock (1.173 - 18 V-Thread)



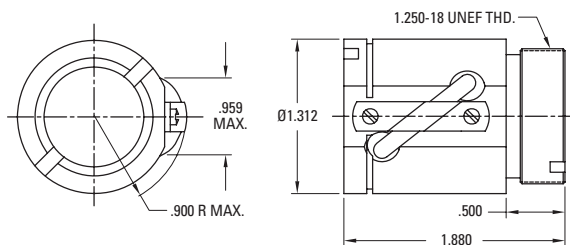
Thread Direction	Right Hand	Left Hand
Nut Material	Carbon Steel	
Dynamic Load (lbs)	950	
Max. Static Load (lbs)	7,750	
Torque to raise 1 lb (oz-in.)	0.57	
Nut weight (lbs)	0.50	
Ball Nut Part Number	8107-448-018	
Flange Part Number	8107-448-007	
Wiper Kit Part Number	8107-101-002	

Single Circuit, Round Ball Nut (1.125 - 18 V-Thread)



Thread Direction	Right Hand	Left Hand
Nut Material	Carbon Steel	
Dynamic Load (lbs)	950	
Max. Static Load (lbs)	7,750	
Torque to raise 1 lb (oz-in.)	0.57	
Nut weight (lbs)	0.50	
Ball Nut Part Number	8107-448-026	
Flange Part Number	N/A	
Wiper Kit Part Number	N/A	

Single Circuit, Round Ball Nut (1.250 - 18 V-Thread)



Thread Direction	Right Hand	Left Hand
Nut Material	Carbon Steel	
Dynamic Load (lbs)	950	
Max. Static Load (lbs)	7,750	
Torque to raise 1 lb (oz-in.)	0.57	
Nut weight (lbs)	0.50	
Ball Nut Part Number	8107-448-047	
Flange Part Number	N/A	
Wiper Kit Part Number	N/A	

Note: Dimensional information for all End Journals and Bearing Supports is available on page 142. Information on required lubrication is on page 172.

0.750 x 0.200

Precision Rolled Ball Screws — Inch Series

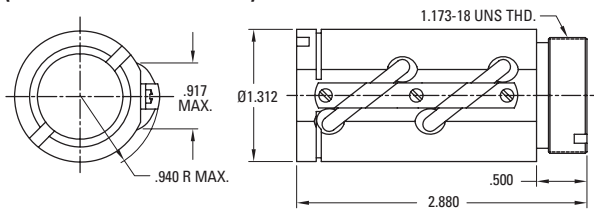
Diameter x Lead (in.)	0.750 x 0.200
Lead Accuracy (in/ft)	± 0.004
Screw Weight (lbs/ft)	1.4
Screw Root Diameter (in.)	0.66
Nominal Ball Diameter (in.)	0.125
Number of Starts	1

Ball Screw Part Numbers

Thread Direction	Right Hand	Left Hand	Right Hand
Screw Material	Carbon Steel	Carbon Steel	Stainless Steel
Standard Length	72"		
Maximum Length	144"		
Part Number	190-9101		

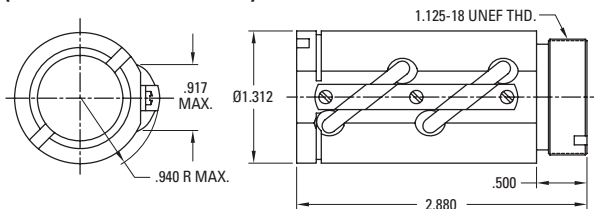
Ball screws can be cut to the length you require. Specify ball screw part number and overall length at time of order.

Double Circuit, Round Ball Nut with Load Lock (1.173 - 18 V-Thread)



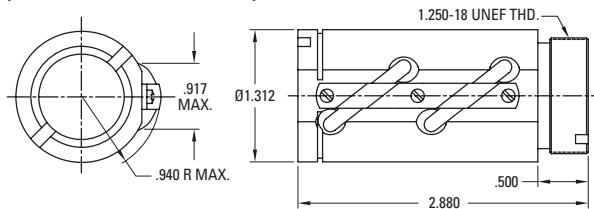
Thread Direction	Right Hand	Left Hand
Nut Material	Carbon Steel	
Dynamic Load (lbs)	1,900	
Max. Static Load (lbs)	18,800	
Torque to raise 1 lb (oz-in.)	0.57	
Nut weight (lbs)	0.75	
Ball Nut Part Number	8107-448-016	
Flange Part Number	8107-448-007	
Wiper Kit Part Number	8107-101-002	

Double Circuit, Round Ball Nut with Load Lock (1.125 - 18 V-Thread)



Thread Direction	Right Hand	Left Hand
Nut Material	Carbon Steel	
Dynamic Load (lbs)	1,900	
Max. Static Load (lbs)	18,800	
Torque to raise 1 lb (oz-in.)	0.57	
Nut weight (lbs)	0.75	
Ball Nut Part Number	8107-448-027	
Flange Part Number	N/A	
Wiper Kit Part Number	N/A	

Double Circuit, Round Ball Nut with Load Lock (1.250 - 18 V-Thread)



Thread Direction	Right Hand	Left Hand
Nut Material	Carbon Steel	
Dynamic Load (lbs)	1,900	
Max. Static Load (lbs)	18,800	
Torque to raise 1 lb (oz-in.)	0.57	
Nut weight (lbs)	0.75	
Ball Nut Part Number	8107-448-046	
Flange Part Number	N/A	
Wiper Kit Part Number	N/A	

Note: Dimensional information for all End Journals and Bearing Supports is available on page 142. Information on required lubrication is on page 172.

0.750 x 0.200

Precision Rolled Ball Screws — Inch Series

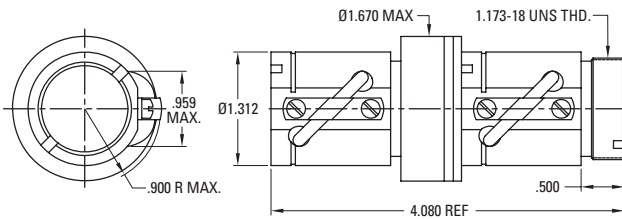
Diameter x Lead (in.)	0.750 x 0.200
Lead Accuracy (in/ft)	± 0.004
Screw Weight (lbs/ft)	1.4
Screw Root Diameter (in.)	0.66
Nominal Ball Diameter (in.)	0.125
Number of Starts	1

Ball Screw Part Numbers

Thread Direction	Right Hand	Left Hand	Right Hand
Screw Material	Carbon Steel	Carbon Steel	Stainless Steel
Standard Length	72"		
Maximum Length	144"		
Part Number	190-9101		

Ball screws can be cut to the length you require. Specify ball screw part number and overall length at time of order.

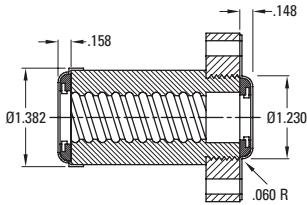
Preloaded, Single Circuit, Round Ball Nut (1.173 - 18 V-Thread)



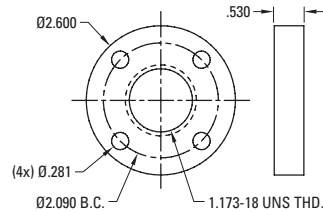
Thread Direction	Right Hand	Left Hand
Nut Material	Carbon Steel	
Dynamic Load (lbs)	950	
Max. Static Load (lbs)	7,750	
Torque to raise 1 lb (oz-in.)	0.57	
Nut weight (lbs)	1.20	
Ball Nut Part Number	8107-448-025	
Flange Part Number	8107-448-007	
Wiper Kit Part Number	8107-101-002	

Wiper and Flange Kits

Wiper



Flange



Wiper Part Number	8107-101-002	
Flange Part Number	8107-448-007	

Note: Dimensional information for all End Journals and Bearing Supports is available on page 142. Information on required lubrication is on page 172.